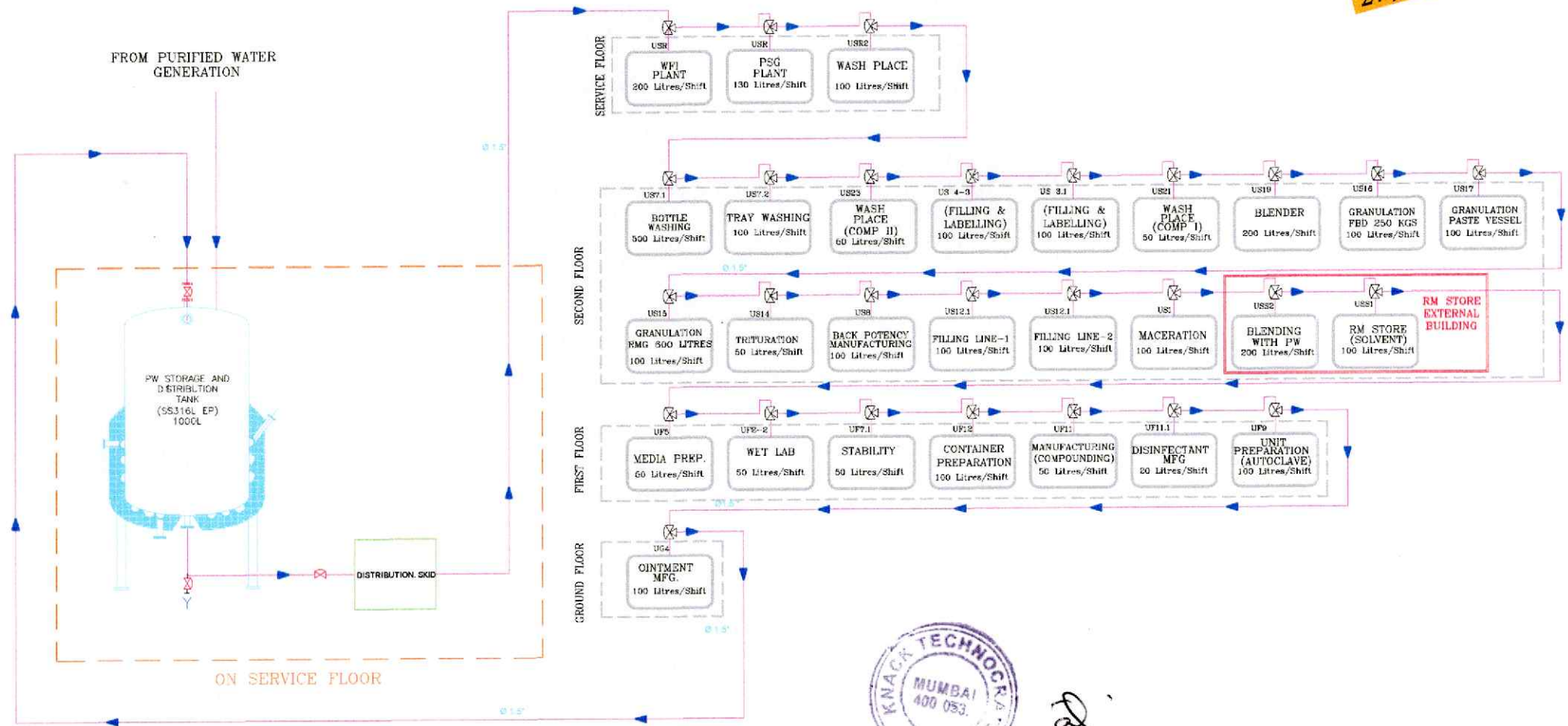



PROPOSED SCHEMATIC DIAGRAM - PURIFIED WATER

27 / 07 / 2023



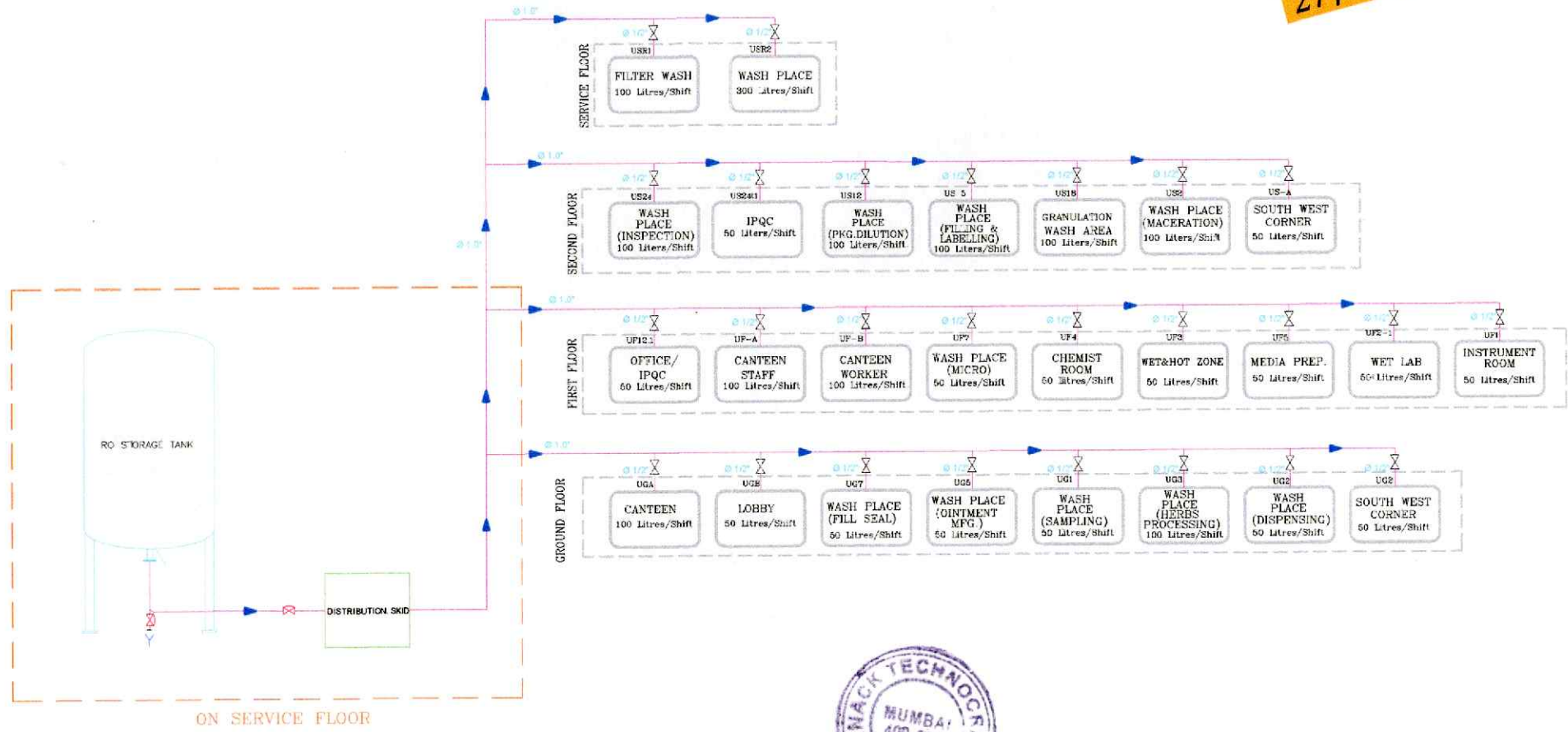
LEGENDS	ABBREVIATION :-
— Ø 2.0" PURIFIED WATER PIPE LOOP SYSTEM	IPQC - INPROCESS QUALITY CONTROL
MOC : SS 316 L	MFG. - MANUFACTURING
UG , UF , US , USRARE UTILITY USER POINTS	WFI - WATER FOR INJECTION
TOTAL NO. OF USER POINTS :- 28 NOS.	PSG - PURE STEAM GENERATOR

NOTE :- ALL CONSUMMATIONS ARE APPROXIMATE , MAY VARY AS PER THE EQUIPMENTS /PROCESS REQUIREMENT & VENDOR'S SELECTION.	
--	--

		HOMCO.			
		CONSULTANT:KNACK TECHNOCRATS			
42 AVINASH, J.P. ROAD, ANDHERI (W), MUMBAI - 400 053					
TEL: 91 22 263140 / 0,26361629					
EMAIL : info@knacktechnocrats.com					
ALL DIMENSIONS ARE IN METERS UNLESS OTHERWISE SPECIFIED.					
DRAWN BY	CHECKED BY	DATE	SCALE	DWG NO.	REVISION
ABID H.	ANSARI	27-07-2023	N.T.S	KT/NO/P/CF/ST-40/A3	R-2022
TITLE SCHEMATIC DIAGRAM - PURIFIED WATER					
FILE Z:\Homco\2023\PURIFIED WATER SYSTEM\27-07-2023\Purified water consumption\12-09-2023\Schematic					

PROPOSED SCHEMATIC DIAGRAM - RO WATER


27/07/2023



LEGENDS	ABBREVIATION :-
RO WATER PIPE LINE	IPQC - INPROCESS QUALITY CONTROL
MOC : SS 304	MFG. - MANUFACTURING
UG , UF , US , USRARE UTILITY USER POINTS	BALL VALVE
TOTAL NO. OF USER POINTS :- 26 NOS.	

ABBREVIATION :-
IPQC - INPROCESS QUALITY CONTROL
MFG. - MANUFACTURING
BALL VALVE

NOTE :- ALL CONSUMMATIONS ARE APPROXIMATE , MAY VARY AS PER THE EQUIPMENTS / PROCESS REQUIREMENT & VENDOR'S SELECTION.



HOMCO.

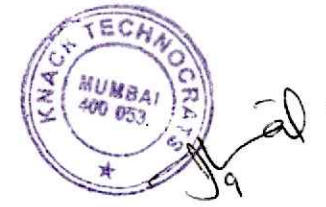
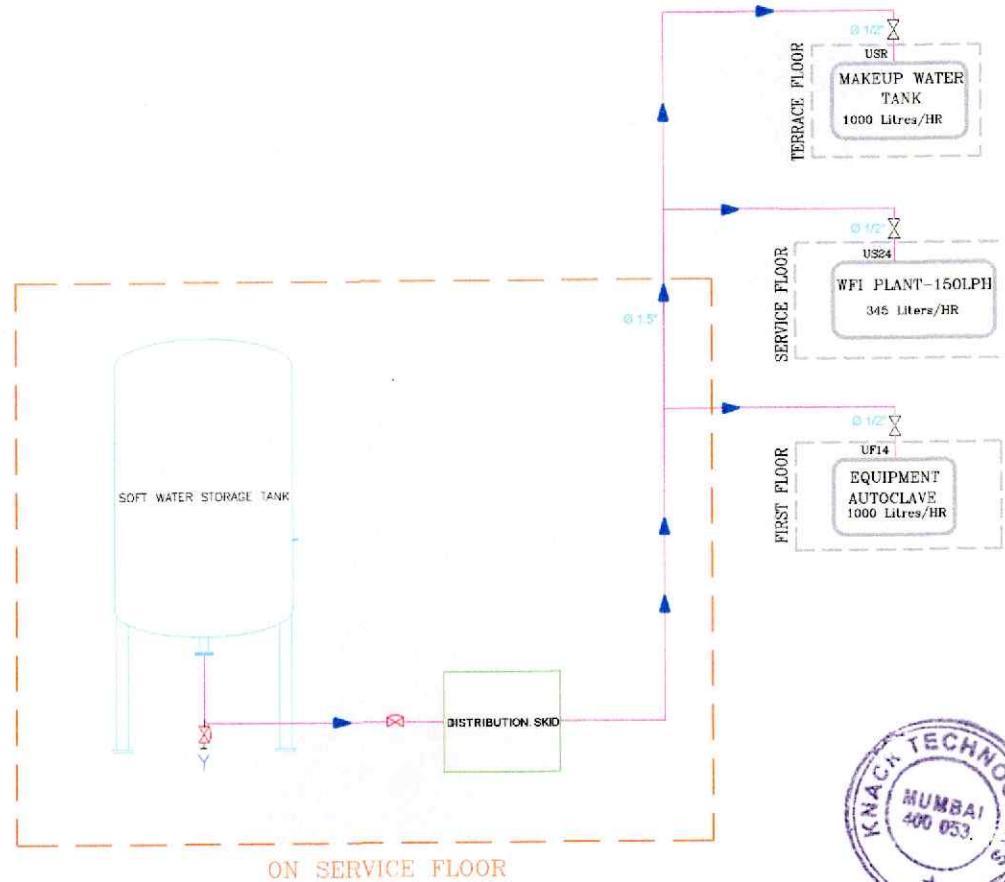
CONSULTANT:KNACK TECHNOCRATS

42 AVINASH, J.P. ROAD, ANDHERI (W), MUMBAI - 400 053
 TEL: 91 22 26314010;26381629
 EMAIL : info@knacktechnocrats.com

ALL DIMENSIONS ARE IN METERS UNLESS OTHERWISE SPECIFIED.					
DRAWN BY	CHECKED BY	DATE	SCALE	DWG NO.	REVISION
ABID H.	I ANSARI	27-07-2023	N.T.S	KT/A10/P/07/01-10/A.2	R-2022
TITLE		SCHEMATIC DIAGRAM - RO WATER			
FILE Z:\Homco\2023\PURIFIED WATER SYSTEM\27-07-2023\RO water consumption\12-09-2023\Schematic SCHEMATI					

PROPOSED SCHEMATIC DIAGRAM - SOFT WATER

27/07/2023



LEGENDS	<i>Soft</i>	ABBREVIATION:-
— RO WATER PIPE LINE		WFI - WATER FOR INJECTION
MOC : SS 304		⊗ BALL VALVE
UG , UF , US , USRARE UTILITY USER POINTS		
TOTAL NO. OF USER POINTS :- 03 NOS.		

NOTE :- ALL CONSUMMATIONS ARE APPROXIMATE , MAY VARY AS PER THE EQUIPMENTS / PROCESS REQUIREMENT & VENDOR'S SELECTION.

HOMCO.

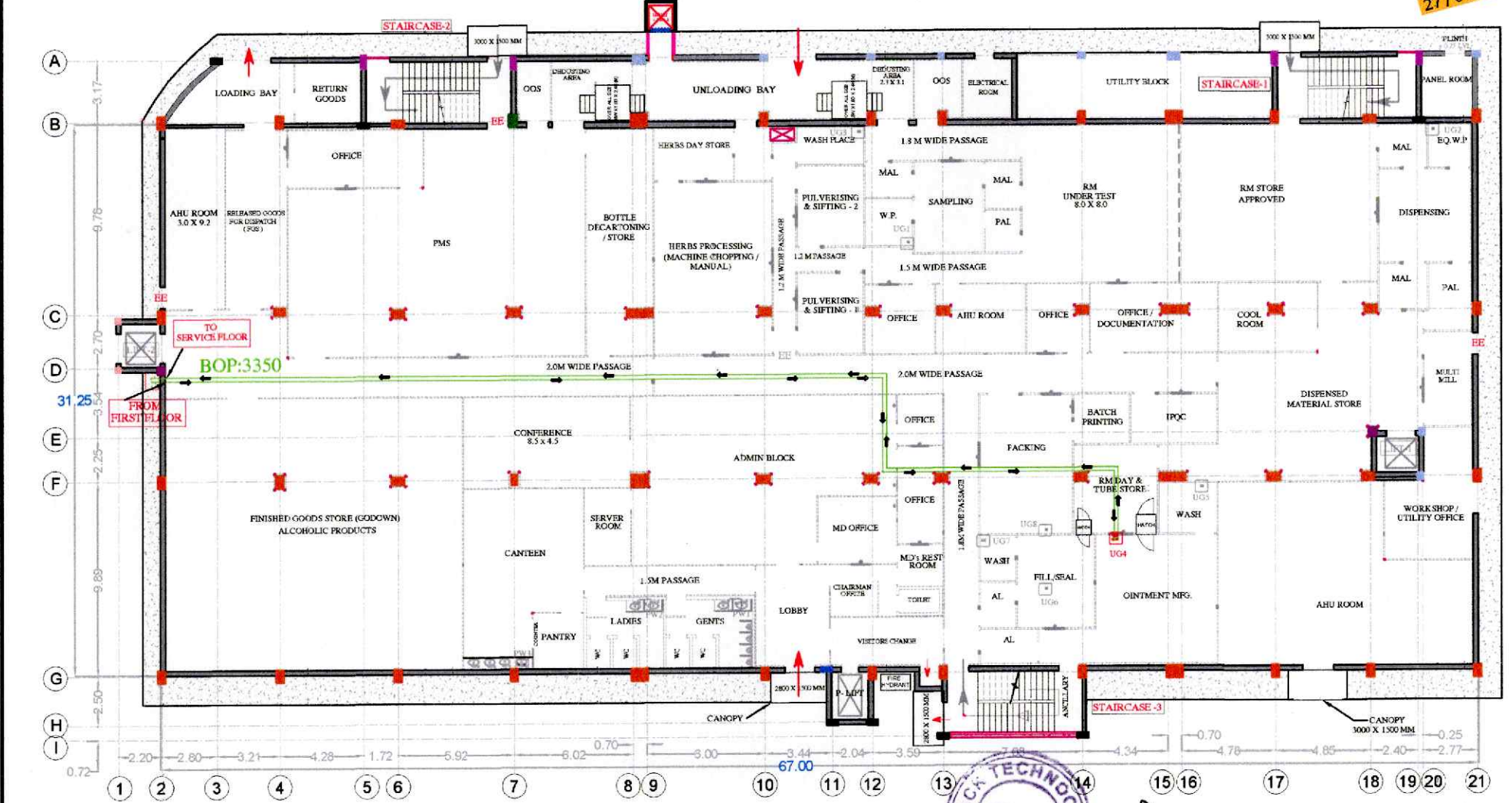
CONSULTANT:KNACK TECHNOCRATS

42 AVINASH, J.P. ROAD, ANDHERI (W), MUMBAI - 400 053
 TEL: 91 22 26314010,26361629
 EMAIL : info@knacktechnocrats.com

ALL DIMENSIONS ARE IN METERS UNLESS OTHERWISE SPECIFIED.					
DRAWN BY	CHECKED BY	DATE	SCALE	DWG NO.	REVISION
ABID H.	I ANSARI	27-07-2023	N.T.S	KT/HO/P/GF/ST-AD/A2	R-2022
TITLE		SCHEMATIC DIAGRAM - SOFT WATER			
FILE Z:\Homco\2023\PURIFIED WATER SYSTEM\27-07-2023\Soft water Consumption\12-09-2023\Schematic SCHEMAT					

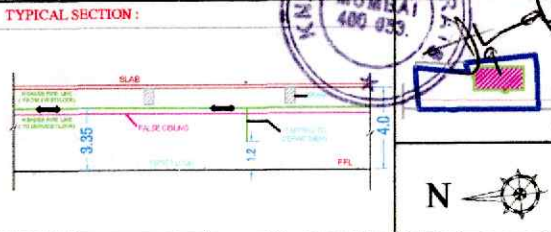
PURIFIED WATER PIPE ROUTING - (GROUND FLOOR)

27/07/2023

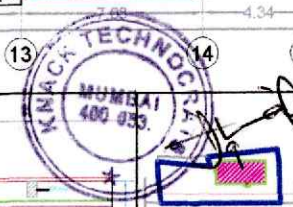



LEGENDS :	
CODE	LOCATION
UG-4	OINTMENT MFG. PLANT
	MOC : SS 316 L
	NO. OF USER POINTS (ZERO DEAD LEG VALVE) :- 1 NO.
	PIPE QUANTITY - 140 METRS (APPROX)
	BOP (BOTTOM OF PIPE) - 3.35 M FROM FFL
	IN ROOM 1200 MM FROM FINISHED FLOOR LEVEL
	TAPPING HEIGHT : OR AS PER EQUIPMENT CONNECTION REQUIREMENT

HEIGHT DETAILS :-	
	BOTTOM OF SLAB :- 4.0 M
	BOTTOM OF BEAM :- 3.450 M
	FALSE CEILING HEIGHT : PLEASE REFER FALSE CEILING LAYOUT
	PW - PURIFIED WATER



NOTE : PIPE ROUT IS ONLY INDICATIVE , IT MAY VARY AS PER SITE FEASIBILITY.





HOMCO.

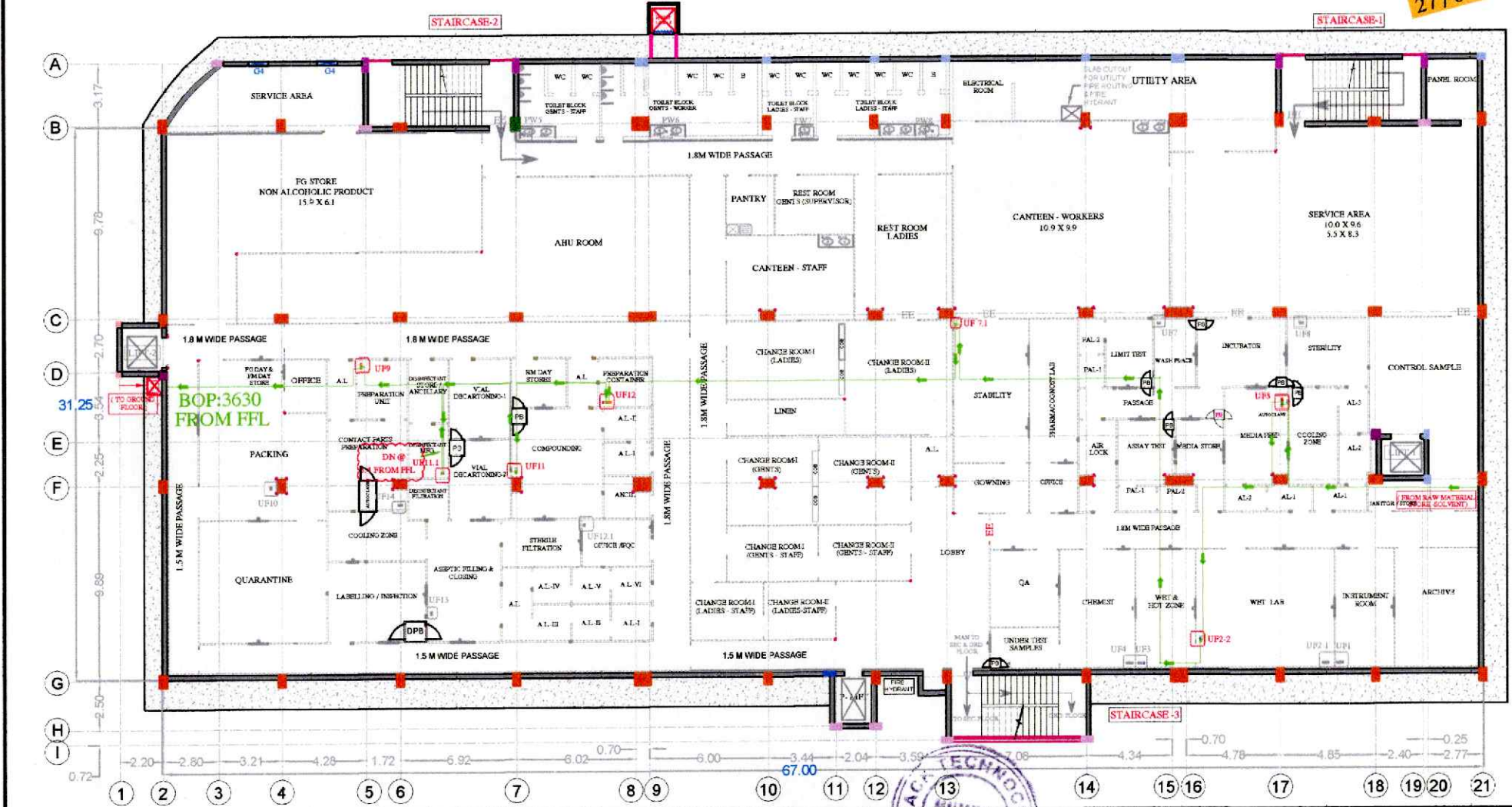
CONSULTANT: KNACK TECHNOCRATS

42 AVINASH, J.P. ROAD, ANDHERI (W), MUMBAI - 400 053
 TEL: 31 22 26314010, 26361629
 EMAIL : info@knacktechnocrats.com

ALL DIMENSIONS ARE IN METERS UNLESS OTHERWISE SPECIFIED.			
DRAWN BY	CHECKED BY	SCALE	REVISION
ARID-I	ANSARI	1:27-07-2023	NIT-5
TITLE : PURIFIED WATER PIPE ROUTING - (GROUND FLOOR)			
FILE : Z:\Hrc\co\2023\PURIFIED WATER SYSTEM\27-07-2023\Purified water cons\unp\m\13-08-2023\Plan_Purified.PDW			

PURIFIED WATER PIPE ROUTING - (FIRST FLOOR)

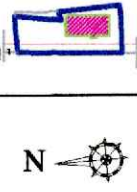
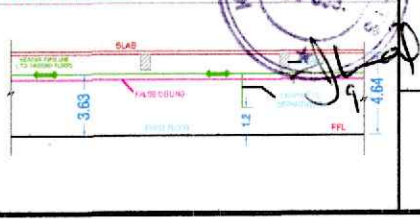
27/07/2023




CODE	LOCATION	DESCRIPTION
UF-2-2	WBT LAB	Ø 1.5" PURIFIED WATER PIPE
UF-7-1	STABILITY	MOC : SS 316L
UF-9	PREPARATION UNIT	NO. OF USER POINTS (ZERO DEAD LEG VALVE):- 06 NOS.
UF-11	COMPOUNDING	AUTO ZERO DEAD LEG VALVE :- 1 NO.
UF-11-1	DISINFECTANT MFG.	PIPE QUANTITY - 180 METERS (APPROX)
UF-12	PREPARATION CONTAINER	BOP (BOTTOM OF PIPE) - 3.63 M FROM FFL
UF-5	MEDIA PREPARATION	IN ROOM : 200 MM FROM FINISHED FLOOR LEVEL TAPPING HEIGHT : OR AS PER EQUIPMENT CONNECTION REQUIREMENT

ABBREVIATION :-
PW - PURIFIED WATER
HEIGHT DETAILS FROM FFL :-
BOTTOM OF SLAB :- 4.64 M
BOTTOM OF BEAM :- 4.0 M
FALSE CEILING HEIGHT :- (PLEASE REFER FALSE CEILING LAYOUT)

TYPICAL SECTION





HOMCO.

CONSULTANT:KNACK TECHNOCRATS

42 AVIKASH, J.P. ROAD, ANDHERI (W), MUMBAI - 400 053
 TEL: 91 22 26314010,26361629
 EMAIL: info@knacktechnocrats.com

ALL DIMENSIONS ARE IN METERS UNLESS OTHERWISE SPECIFIED.

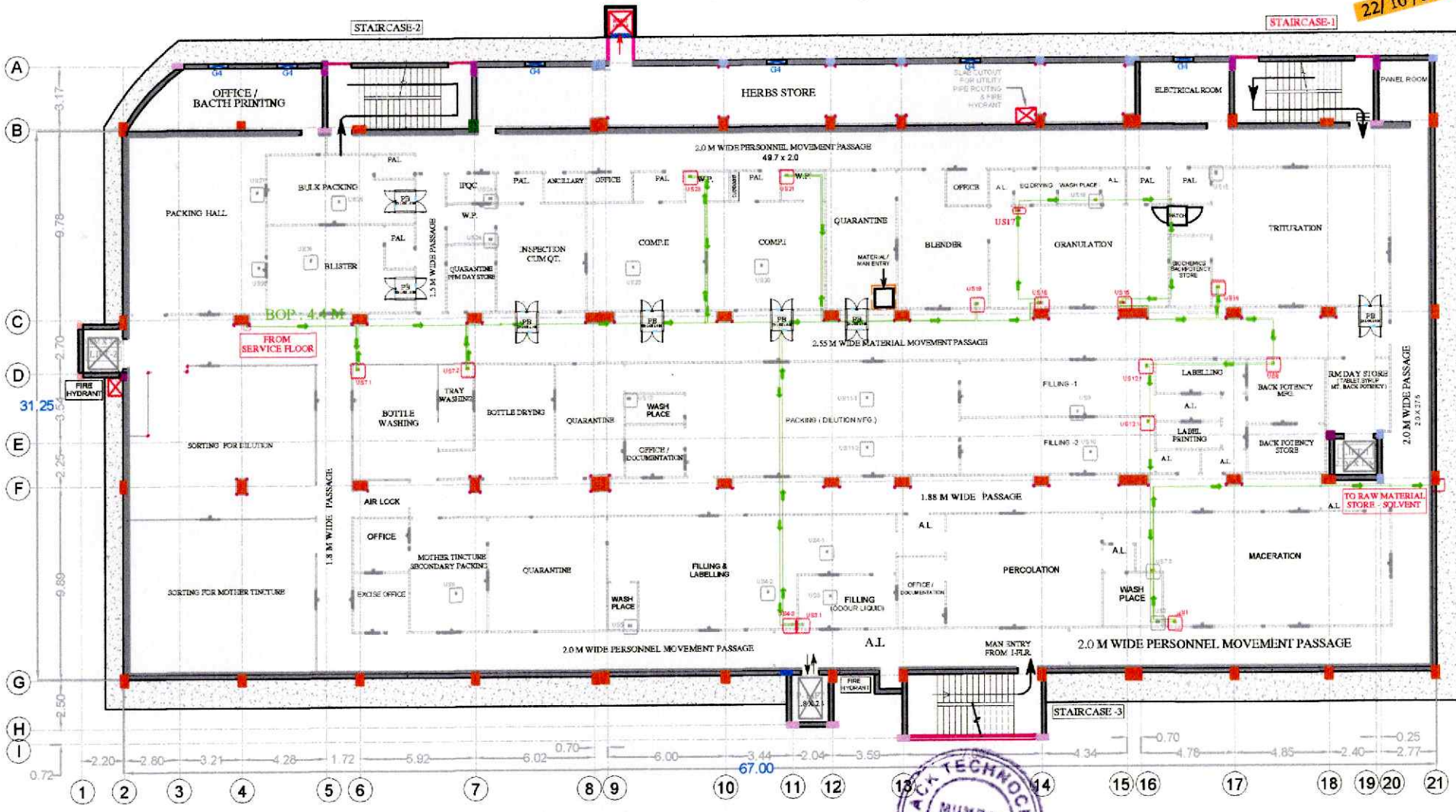
DRAWN BY	CHECKED BY	DATE	SCALE	DWG NO.	REVISION
ABD H	I ANSARI	27-06-2023	N.T.S	KY/NO/11/05-01/AR	R-2022

TITLE: PURIFIED WATER PIPE ROUTING - (FIRST FLOOR)

FILE: Z:\chem\2022\PURIFIED WATER SYSTEM\07-07-2023\Purified water consumption\12-06-2023\Plan - Purified Water

PURIFIED WATER PIPE ROUTING - (SECOND FLOOR)

22/10/2022



LEGENDS :						HEIGHT DETAILS FROM FFL :-		TYPICAL SECTION DETAILS :-	
CODE	LOCATION	CODE	LOCATION	CODE	DESCRIPTION	ABBREVIATION :-	BOTTOM OF SLAB :- 5.08 M		
US-1	MACERATION	US-15	GRANULATION - RMG	US-31	FILLING (ODOUR LIQUID)	Ø 1.5" PURIFIED WATER PIPE MOC : SS 316L	BOTTOM OF BEAM :- 4.52 M		
US-71	BOTTLE WASHING	US-16	GRANULATION - FRD	US-43	FILLING & LABELING	PW - PURIFIED WATER	FALSE CEILING :- PLEASE REFER FALSE CEILING LAYOUT		
US-72	TRAY WASHING	US-17	PASTE VESSEL			NO. OF USER POINTS (ZERO DEAD LEG VALVE) :- 15 NOS.			
US-8	BACK POTENCY MFG.	US-19	BLENDER			PIPE QUANTITY - 300 METERS (APPROX)			
US-12.1	FILLING - 1	US-21	WASH PLACE - COMPRESSION 1			BOP (BOTTOM OF PIPE) - 4 MM FROM FFL			
US-12.1	FILLING - 2	US-23	WASH PLACE - COMPRESSION 2			JN ROOM 1200 MM FROM FINISHED FLOOR LEVEL TAPPING HEIGHT :- ON AS PER EQUIPMENT CONNECTION REQUIREMENT			
US-14	TRITURATION					NOTE: THIS ROUTE IS ONLY INDICATIVE, IT MAY VARY AS PER SITE PRACTICABILITY.			

HOMCO.

CONSULTANT: KNACK TECHNOCRAT'S

42 AMRASH, J.P. ROAD, ANDHERI (W), MUMBAI - 400 053
 TEL: 91 22 26314010, 26361829
 EMAIL: info@knacktechnocrats.com

ALL DIMENSIONS ARE IN METERS UNLESS OTHERWISE SPECIFIED.

DRAWN BY	CHECKED BY	DATE	SCALE	DWG NO.	REVISION
ABID H	I ANSANI	22-10-2022	N.T.S	HT/NO/P/PP/PROJ/A3	R-2022

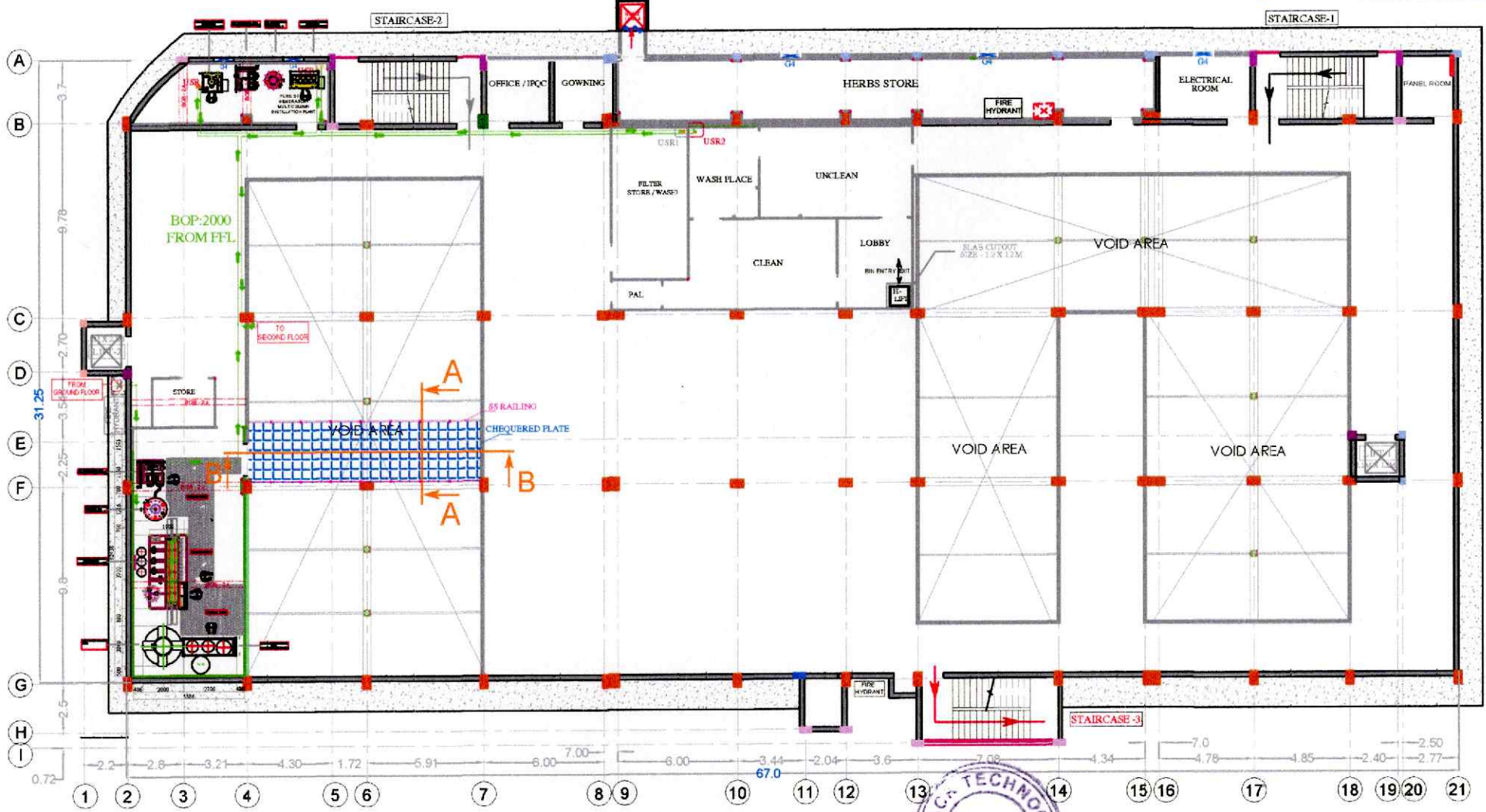
TITLE: PURIFIED WATER PIPE ROUTING - (SECOND FLOOR)

FILE: Z:\HOMCO\2022\PURIFIED WATER SYSTEM\07-07-2022\Purified water consultant\13-08-2022\Fed.W

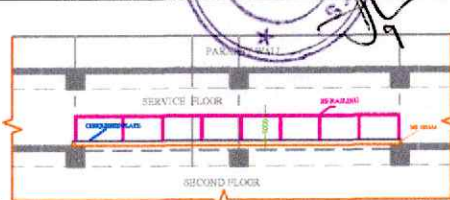
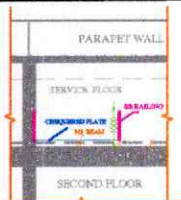


PURIFIED WATER PIPE ROUTING - (SERVICE FLOOR)

27/07/2023



LEGENDS :		ABBREVIATION :-	
CODE	LOCATION	Ø 1.5" PURIFIED WATER PIPE	
USR-2	WASH PLACE	MOC : SS 316L	● PW - PURIFIED WATER
USR	WFI PLANT	NO. OF USER POINTS (ZERO DEAD LEG VALVE) :- 3 NOS.	HEIGHT DETAILS FROM FFL:
USR	PSG PLANT	PIPE QUANTITY - 120 MTRS (APPROX)	BOTTOM OF SLAB : 2.7 M
		BOP (BOTTOM OF PIPE) - 2.0 M FROM FFL.	BOTTOM OF BEAM : 2.1 M
		IN ROOM 1200 MM FROM FINISHED FLOOR LEVEL.	FALSE CEILING : PLEASE
		TAPPING HEIGHT : OR AS PER EQUIPMENT CONNECTION REQUIREMENT	REFER FALSE CEILING LAYOUT



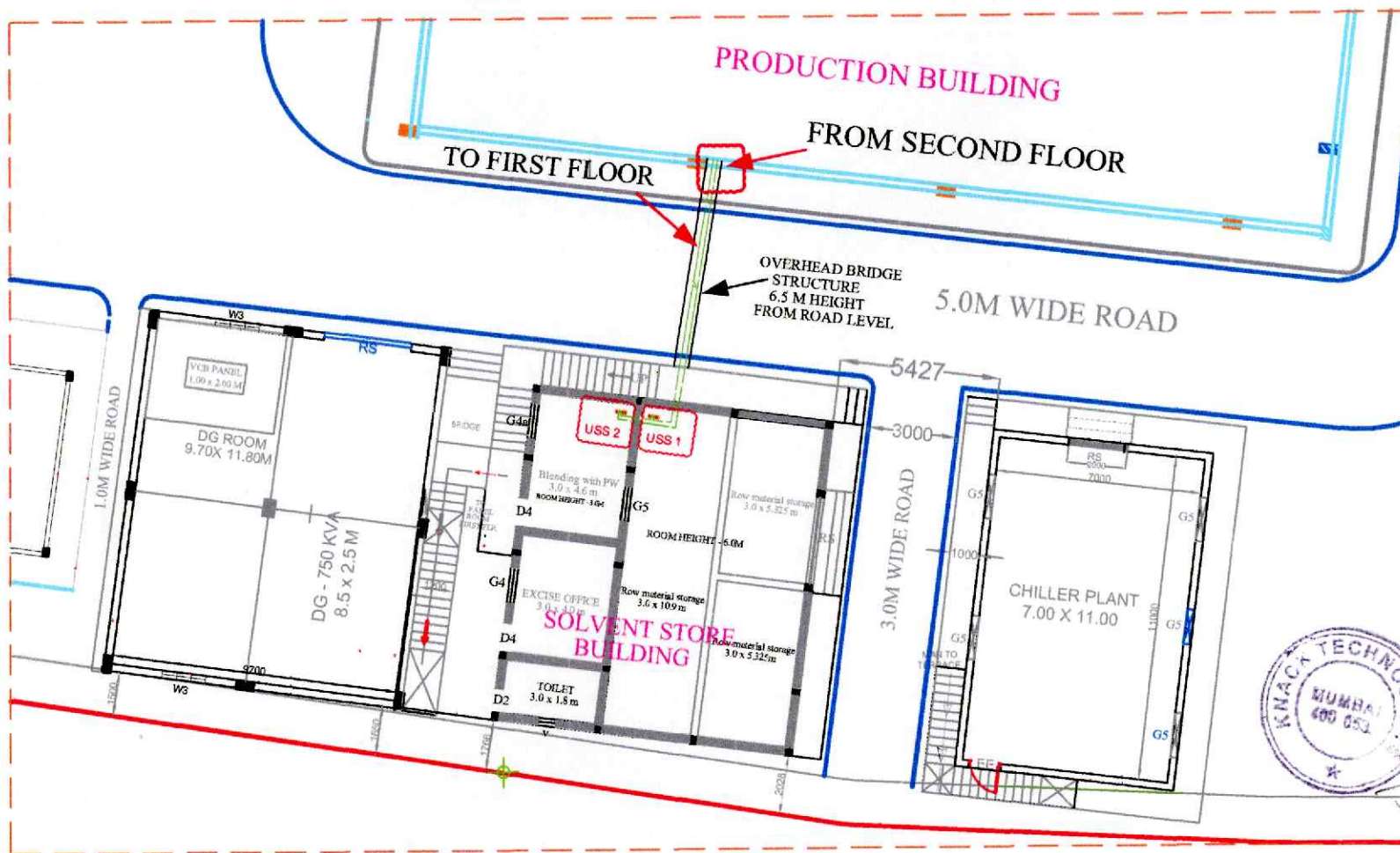
HOMCO.
CONSULTANT:KNACK TECHNOCRATS
 42 AVINASH, J.P. ROAD, ANDHERI (W), MUMBAI - 400 053
 TEL: 91 22 26314010,26361629
 EMAIL : info@knacktechnocrats.com

ALL DIMENSIONS ARE IN METERS UNLESS OTHERWISE SPECIFIED.
 DRAWN BY : I ANSAR | CHECKED BY : DATE : 27-07-2023 | SCALE : | DWG NO. : | REVISION :
 TITLE : PURIFIED WATER PIPE ROUTING - (SERVICE FLOOR)
 FILE : Z:\Homco\27289\FUR\FED WATER SYS\FM27-27-2023\Purified water_consumption\12-06-2028\Fur_Pur_FED.WPJ

NOTE : PIPE ROUT IS ONLY INDICATIVE, IT MAY VARY AS PER SITE FEASIBILITY.

Purified Water Pipe Route (RAW MATERIAL STORE - SOLVENT)

27/07/2023



LEGENDS :-

CODE	DESCRIPTION	UTILITY	ABBREVIATION :-
USS 1	RAW MATERIAL STORE	PW	● PW - PURIFIED WATER
USS 2	BLENDING WITH PW	PW	
— Ø 1.5" PURIFIED WATER PIPE ,MOC : SS 316 L			
NO. OF USER POINTS (ZERO DEAD LEG VALVE) :- 2 NOS.			
PIPE QUANTITY - 60 MTRS (APPROX)			



HOMCO.

CONSULTANT:KNACK TECHNOCRATS

42 AV NASH, J.P. ROAD, ANDHERI (W), MUMBAI - 400 053
TEL: 91 22 26314010,26361529
EMAIL : info@knacktechnocrats.com

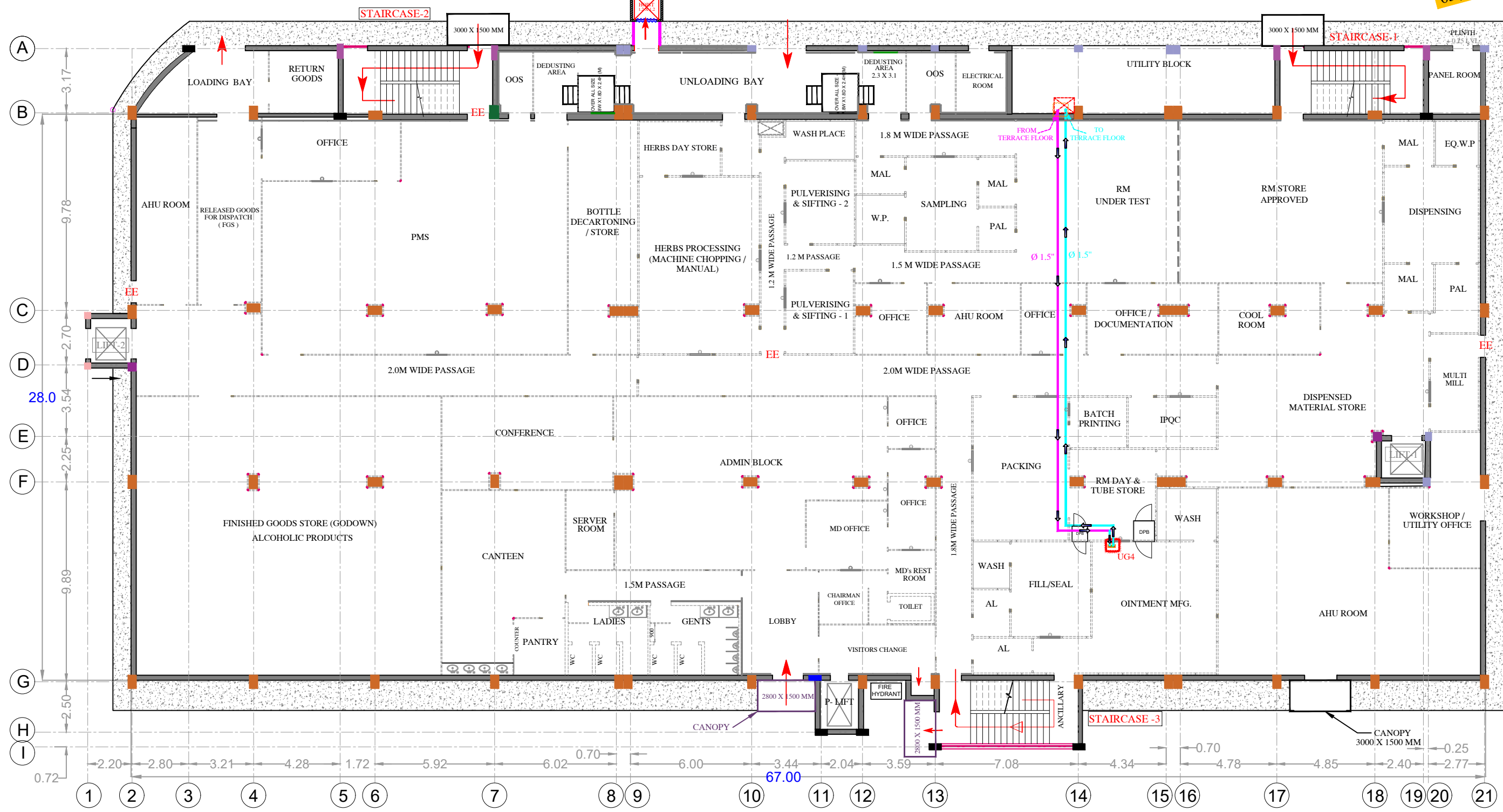
ALL DIMENSIONS ARE IN METERS UNLESS OTHERWISE SPECIFIED.

DRAWN BY	CHECKED BY	DATE	SCALE	DWG NO.	REVISION
ABID H.	I ANSARI	27-07-2023	N.T.S	KT/HO/P/SM/A.1	-
TITLE		PURIFIED WATER PIPE ROUTING - RAW MATERIAL STORE - SOLVENT			

FILE Z:\Homco\2023\PURIFIED WATER SYSTEM\27-07-2023\Purified water consumption\12-09-2023\Pipe Route\PURIFIED W

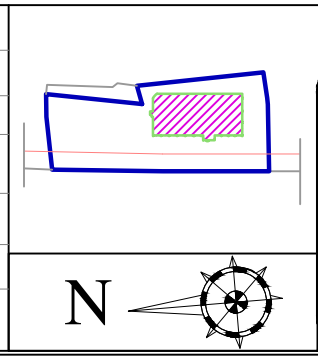
SOFT WATER PIPE ROUTING - (GROUND FLOOR)

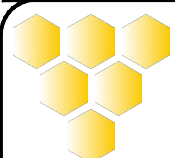
03 / 08 / 2023



LEGENDS : RE - CIRCULATION SOFT WATER PIPE (FROM COOLING TOWER)	
CODE	LOCATION
UG - 4	<p>PROPOSED SOFT WATER RECIRCULATION PIPE ROUTING</p> <p>SUPPLY LINE</p> <p>RETURN LINE</p>
	<p>NOTE :- PIPE SIZE IS MENTION IN THE DRAWING.</p> <p>PIPE QUANTITY : 55M APPROX.</p> <p>MOC : SS304</p> <p>NO. OF USER POINTS :- 1 NO.</p> <p>BOP (BOTTOM OF PIPE) - 3.35 M FROM FFL</p> <p>IN ROOM 1200 MM FROM FINISHED FLOOR LEVEL</p> <p>TAPPING HEIGHT : OR AS PER EQUIPMENT CONNECTION REQUIREMENT</p>

HEIGHT DETAILS :-	
BOTTOM OF SLAB :-	4.0 M
BOTTOM OF BEAM :-	3.450 M
FALSE CEILING HEIGHT : PLEASE REFER FALSE CEILING LAYOUT	





HOMCO.

CONSULTANT:KNACK TECHNOCRATS

42 AVINASH, J.P. ROAD, ANDHERI (W), MUMBAI - 400 053
 TEL: 91 22 26314010,26361629
 EMAIL : info@knacktechnocrats.com

ALL DIMENSIONS ARE IN METERS UNLESS OTHERWISE SPECIFIED.

DRAWN BY	CHECKED BY	DATE	SCALE	DWG NO.	REVISION
ABID H.	I ANSARI	03-08-2023	N.T.S	KT/HO/P/GF/ST-AD/A.2	-

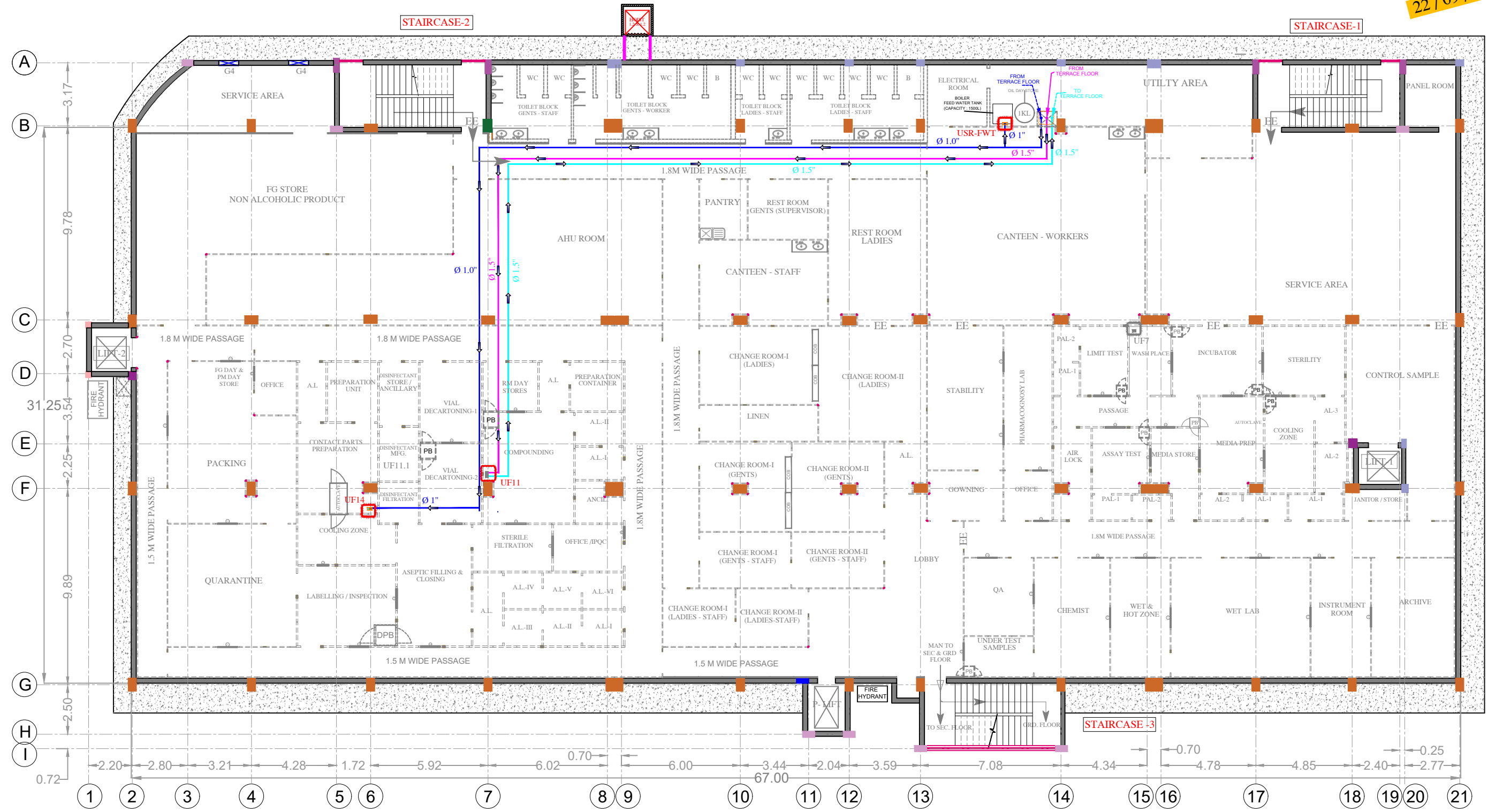
TITLE : SOFT WATER PIPE ROUTING - (GROUND FLOOR)

FILE : Z:\Homco\2024\UTILITY - 2024\Purified Water\Soft water - Re circulation\Softner water pipe routing - GF - 03 - 09 - 2023

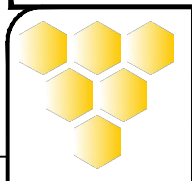
NOTE :- ALL HEADER PIPE LINE ARE RUNNING OVER FALSE CEILING.
 PIPE ROUTES ARE INDICATIVE . MAY VARY AS PER SITE FEASIBILITY.

SOFT WATER PIPE ROUTING - (FIRST FLOOR)

22 / 09 / 2023



LEGENDS :		RE - CIRCULATION SOFT WATER PIPE (FROM COOLING TOWER)		HEIGHT DETAILS FROM FFL :-		
UF-14	EQUIPMENT AUTOCLAVE - HORIZONTAL	NOTE :- PIPE SIZE IS MENTIONED IN THE DRAWING. PIPE QUANTITY : 70M APPROX. MOC : SS304 NO. OF USER POINTS :- 02 NOS. BOP (BOTTOM OF PIPE) - 3.63 M FROM FFL IN ROOM 1200 MM FROM FINISHED FLOOR LEVEL TAPPING HEIGHT : OR AS PER EQUIPMENT CONNECTION REQUIREMENT	UF-11	OPHTHALMIC MANUFACTURING VESSEL - 100 LITRES	PROPOSED SOFT WATER PIPE ROUTE PROPOSED SOFT WATER RECIRCULATION PIPE ROUTING SUPPLY LINE RETURN LINE NOTE :- PIPE SIZE IS MENTIONED IN THE DRAWING. PIPE QUANTITY : 110.0 M APPROX. MOC : SS304 NO. OF USER POINTS :- 01 NO. BOP (BOTTOM OF PIPE) - 3.63 M FROM FFL IN ROOM 1200 MM FROM FINISHED FLOOR LEVEL TAPPING HEIGHT : OR AS PER EQUIPMENT CONNECTION REQUIREMENT	BOTTOM OF SLAB :- 4.64 M BOTTOM OF BEAM :- 4.0 M FALSE CEILING HEIGHT :- (PLEASE REFER FALSE CEILING LAYOUT)
USR-FWT	BOILER FEED WATER TANK					



HOMCO.

CONSULTANT-KNACK TECHNOCRATS

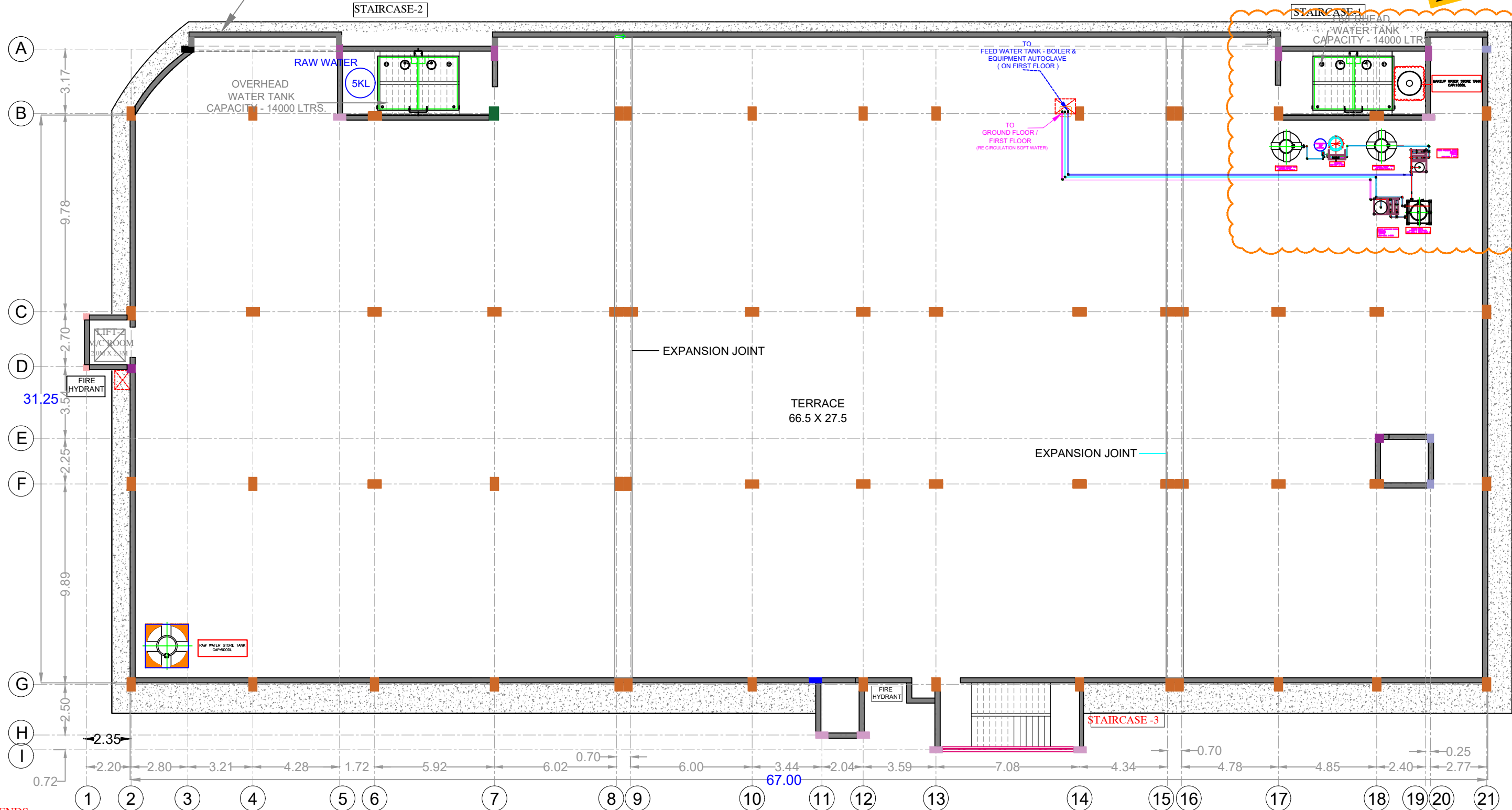
42 AVINASH, J.P. ROAD, ANDHERI (W), MUMBAI - 400 053
 TEL: 91 22 26314010,26361629
 EMAIL : info@knacktechnocrats.com

DRAWN BY	CHECKED BY	DATE	SCALE	DWG NO.	REVISION
ABID H	T ANSARI	03-08-2023	N.T.S	KT/HO/P/FF/QC-CH/A.2	-
TITLE : SOFT WATER PIPE ROUTING - (FIRST FLOOR)					
FILE : Z:\Homco\2024\UTILITY - 2024\Purified Water\Soft water - Re circulation\Softner water pipe routing - FF - 09 - 2023.dwg					

NOTE :- PIPE ROUTES ARE INDICATIVE , MAY VARY AS PER SITE FEASIBILITY.

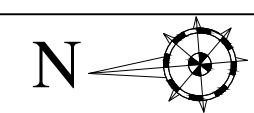
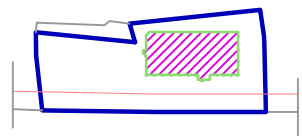
SOFTENER , COOLING TOWER LOCATION & PIPE ROUTING - (TERRACE FLOOR)

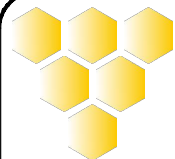
23 / 09 / 2023



LEGENDS :

PROPOSED SOFT WATER PIPE ROUTE	RE - CIRCULATION SOFT WATER PIPE (FROM COOLING TOWER)
NOTE :- PIPE SIZE IS MENTION IN THE DRAWING.	PROPOSED SOFT WATER RECIRCULATION PIPE ROUTING
PIPE SIZE : Ø1.0" , QUANTITY - 25.0M APPROX.	SUPPLY LINE RETURN LINE
MOC : SS 304	NOTE :- PIPE SIZE IS MENTIONED IN THE DRAWING.
BOP (BOTTOM OF PIPE) - 1.0M FROM FFL	PIPE SIZE : Ø1.5" , QUANTITY - 50.0M APPROX.
	MOC : SS304
	BOP (BOTTOM OF PIPE) - 1.0M FROM FFL





HOMCO.

CONSULTANT:KNACK TECHNOCRATS

42 AVINASH, J.P. ROAD, ANDHERI (W), MUMBAI - 400 053
 TEL: 91 22 26314010,26361629
 EMAIL : info@knacktechnocrats.com

ALL DIMENSIONS ARE IN METERS UNLESS OTHERWISE SPECIFIED.

DRAWN BY	CHECKED BY	DATE	SCALE	DWG NO.	REVISION
ABID H	I ANSARI	23-09-2023	N.T.S	KT/HO/P/SR/C.4	-

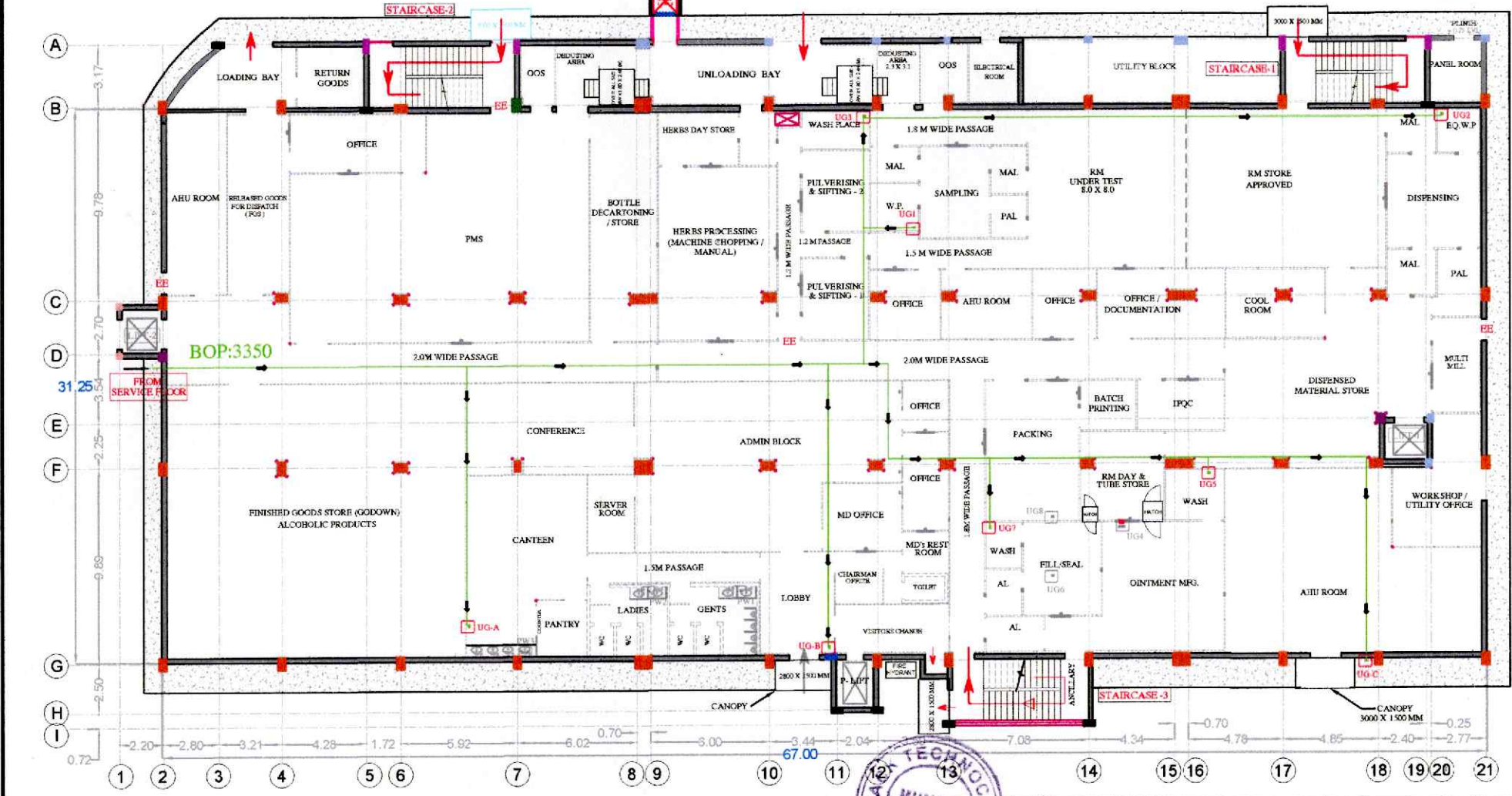
TITLE : SOFT WATER , COOLING TOWER LOCATION & PIPE ROUTING - (TERRACE FLOOR)

FILE : Z:\Homco\2024\UTILITY - 2024\Purified Water\Soft water - Re circulation\Proposed Softener plant & Cooling Tower lo

NOTE :- PIPE ROUTES ARE INDICATIVE , MAY VARY AS PER SITE FEASIBILITY.

RO WATER PIPE ROUTING - (GROUND FLOOR)

27/07/2023



LEGENDS :

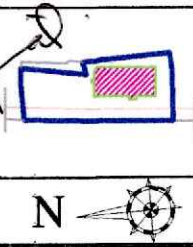
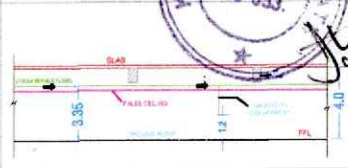
CODE	LOCATION	
UG-1	WASH PLACE (SAMPLING)	RO WATER PIPE
UG-2	EQ. WASH (DISPENSING)	MOC: SS 304
UG-3	WASH PLACE (HERBS PROCESSING)	PIPE SIZE FOR HEADER LINE - Ø 1.0"
UG-5	WASH PLACE (OINTMENT MFG.)	PIPE SIZE FOR TAPPING - Ø 1.2"
UG-7	WASH PLACE (FILL / SEAL)	NO. OF USER POINTS :- 8 NOS.
UG-A	CANTEEN	BOP (BOTTOM OF PIPE) - 3.35 M FROM PFL
UG-B	LOBBY	IN ROOM 1200 MM FROM FINISHED FLOOR LEVEL.
UG-C	SOUTH WEST CORNER	TAPPING HEIGHT: OR AS PER EQUIPMENT CONNECTION REQUIREMENT

HEIGHT DETAILS :-

BOTTOM OF SLAB :- 4.0 M
BOTTOM OF BEAM :- 3.450 M
FALSE CEILING HEIGHT :
PLEASE REFER FALSE CEILING LAYOUT

NOTE : PIPE ROUT IS ONLY INDICATIVE . IT MAY VARY AS PER SITE FEASIBILITY.

TYPICAL SECTION:-



HOMCO.

CONSULTANT:KNACK TECHNOCRATS

42 AVKASH, J.P. ROAD, ANDHERI (W), MUMBAI - 400 053.
 TEL: 31 22 26314010,26361629
 EMAIL: info@knacktechnocrats.com

ALL DIMENSIONS ARE IN METERS UNLESS OTHERWISE SPECIFIED.

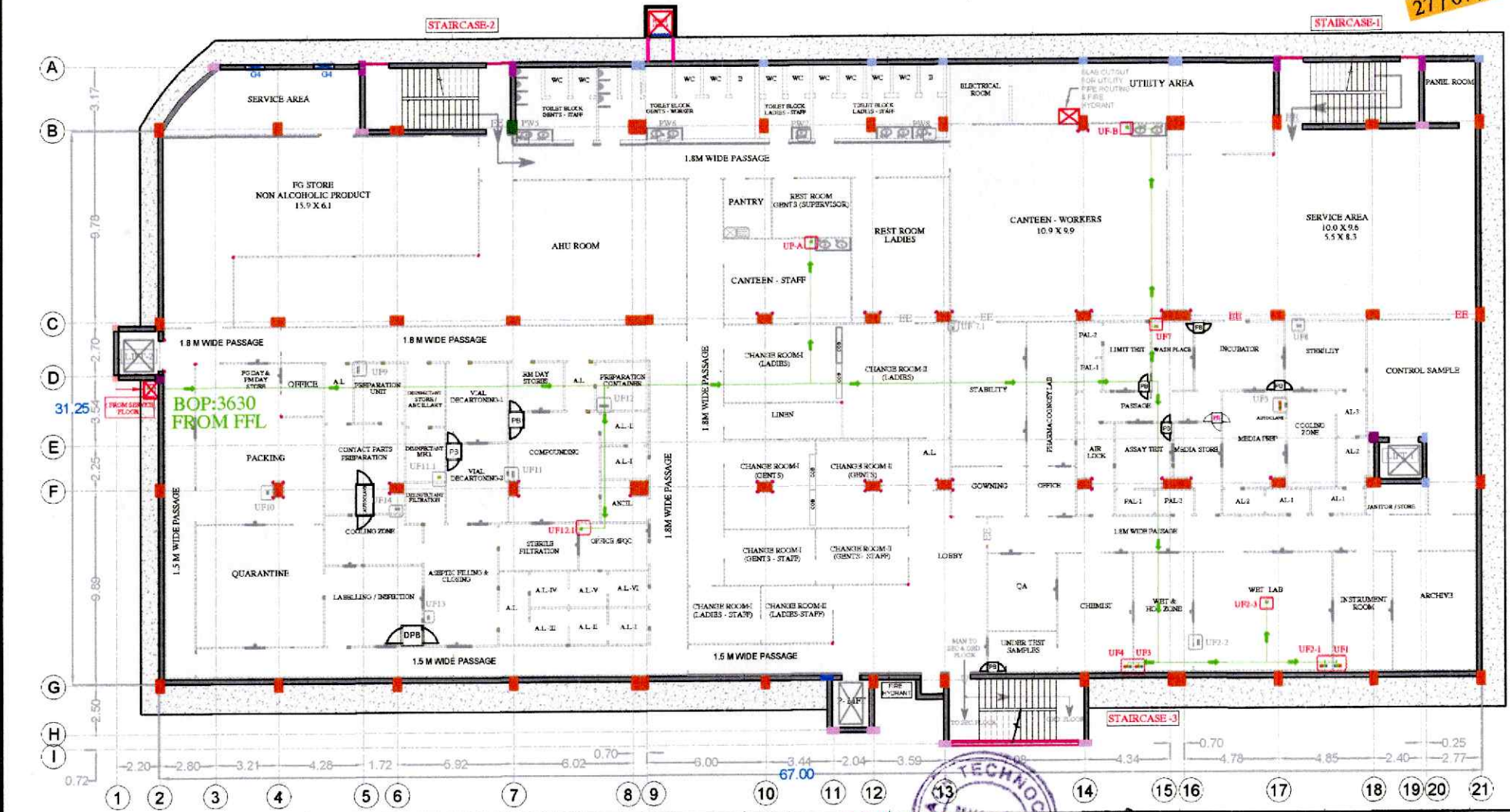
DRAWN BY	CHECKED BY	DATE	SCALE	DWG NO.	REVISION
T ANSARI		27-07-2023	N.T.S.	RO/WATER/PT/RT-06/AS	R-2022

TITLE: RO WATER PIPE ROUTING - (GROUND FLOOR)

FILE: Z:\hrc\co2022\PURIFIED WATER SYSTEM\07-07-2023\RO water cons\proj\rt12-30-2023\pipe routing\RO WATER PIPE R

RO WATER PIPE ROUTING - (FIRST FLOOR)

27 / 07 / 2023



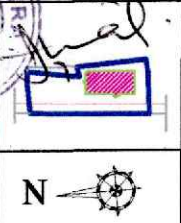
LEGENDS :

CODE	LOCATION	CODE	LOCATION
UF-1	INSTRUMENT ROOM	UF-12.1	OFFICE / IPQC
UF-2.1	WET LAB	UF-A	CANTEEN - STAFF
UF-2.3	WET LAB	UF-B	CANTEEN - WORKER
UF-3	WET & HOT ZONE		
UF-4	CHEMIST		
UF-7	WASH PLACE		

RO WATER PIPE
 MOC : SS 304
 PIPE SIZE FOR HEADER LINE - Ø 1.0"
 PIPE SIZE FOR TAPPING - Ø 1/2"
 NO. OF USER POINTS :- 09 NOS.
 BOP (BOTTOM OF PIPE) :- 3.63 M FROM FFL
 IN ROOM 1000 MM FROM FINISHED FLOOR LEVEL
 TAPPING HEIGHT :- OR AS PER EQUIPMENT CONNECTION REQUIREMENT
 NOTE : PIPE ROUTE IS ONLY INDICATIVE, IT MAY VARY AS PER SITE REALITY

HEIGHT DETAILS FROM FFL :-
 BOTTOM OF SLAB :- 4.64 M
 BOTTOM OF BEAM :- 4.0 M
FALSE CEILING HEIGHT :-
 (PLEASE REFER FALSE CEILING LAYOUT)

TYPICAL SECTION :- 400/053



HOMCO.
CONSULTANT: KNACK TECHNOCRATS
 42 AVRASHI, J.P. ROAD, ANDHERI (W), MUMBAI - 400 053.
 TEL: 91 22 26314016, 26361829
 EMAIL: info@knacktechnocrats.com

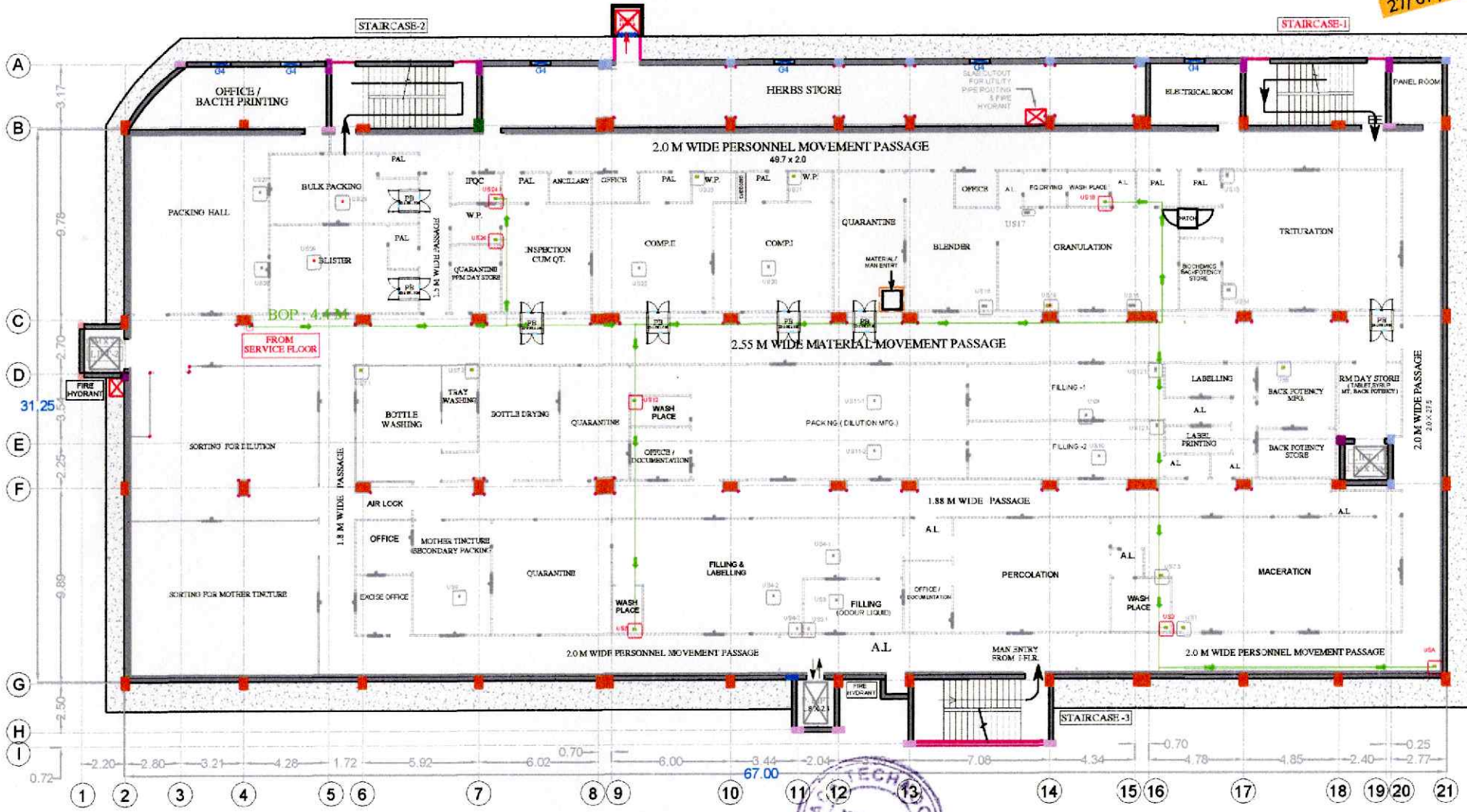
ALL DIMENSIONS ARE IN METERS UNLESS OTHERWISE SPECIFIED.

DRAWN BY	CHECKED BY	DATE	SCALE	DWG NO.	REVISION
ABID H	I ANSARI	27-07-2023	N.T.S	KT/10/WT/SC-01/43	R-2022

TITLE: RO WATER PIPE ROUTING - (FIRST FLOOR)
 FILE: Z:\Homco\0223\UPR\FED WATER SYSTEM\07.07.2023\RO WATER PIPE\mshch112-09-2023\Pipe route RO WATER PIPE

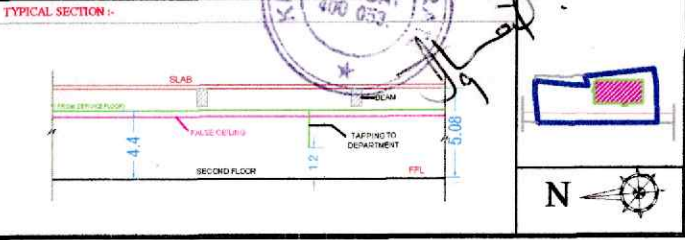
RO WATER PIPE ROUTING - (SECOND FLOOR)


27/07/2023



CODE	LOCATION	UTILITY
US-2	WASH PLACE	RO
US-5	WASH PLACE (FILLING)	RO
US-12	WASH (DILUTION MFG.)	RO
US-18	WASH PLACE - GRANULATION	RO
US-24	WASH PLACE	RO
US-24.1	OFFICE/IPQC	RO
US-A	SOUTH WEST CORNER	RO

HEIGHT DETAILS FROM FFL :-	TYPICAL SECTION :-
BOTTOM OF SLAB :- 5.08 M	
BOTTOM OF BEAM :- 4.52 M	
FALSE CEILING :- PLEASE REFER FALSE CEILING LAYOUT	
RO WATER PIPE	
PIPE SIZE FOR HEADER LINE - Ø 1.0"	
PIPE SIZE FOR TAPPING - Ø 1/2"	
MOC : SS 304	
NO. OF USER POINTS :- 07 NOS.	
BOP (BOTTOM OF PIPE) :- 4.4M FROM FFL	
IN ROOM 1200 MM FROM FINISHED FLOOR LEVEL	
TAPPING HEIGHT : OR AS PER EQUIPMENT CONNECTION REQUIREMENT	
NOTE : PIPE ROUT IS ONLY INDICATIVE , IT MAY VARY AS PER SITE FEASIBILITY.	





HOMCO.

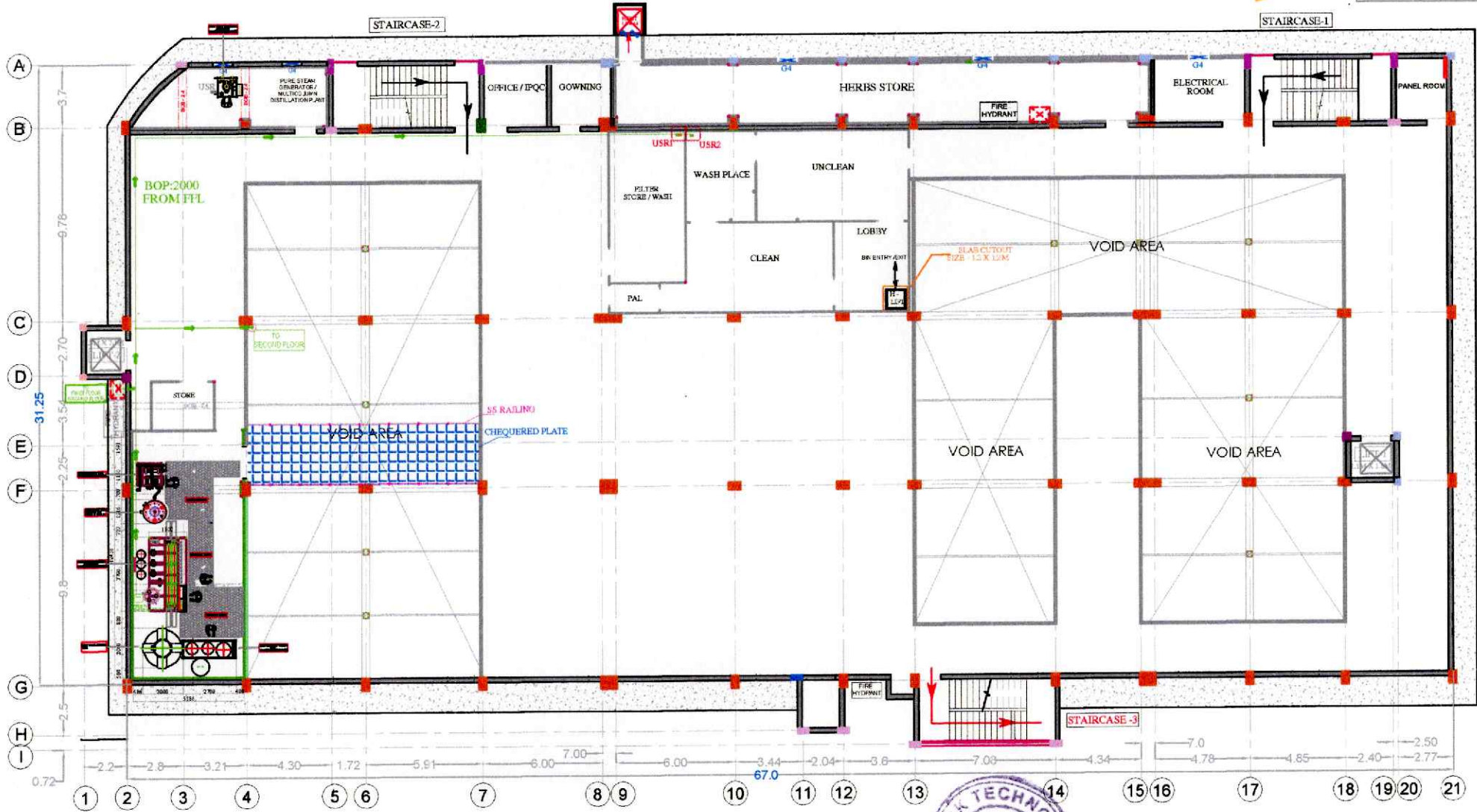
CONSULTANT: KNACK TECH INCRATS

42 AVINASH, J.P. ROAD, ANDHERI (W), MUMBAI - 400 053
 TEL: 91 22 26314010, 26361629
 EMAIL: info@knacktechnocrats.com

ALL DIMENSIONS ARE IN METERS UNLESS OTHERWISE SPECIFIED.			
DRAWN BY	CHECKED BY	DATE	SCALE
ABID H	I ANSARI	27-07-2023	N.T.S
DWG NO.		REVISION	
RO/WATER/PIPE/RO/A3		R-2022	
TITLE			
RO WATER PIPE ROUTING - (SECOND FLOOR)			
FILE Z:\hmc\023\PURIFIED WATER SYSTEM\27-07-2023\RO water cons\mshcn\12-09-2023\Pipe routing\RO WATER PIPE.R			

RO WATER PIPE ROUTING - (SERVICE FLOOR)

21/07/2023

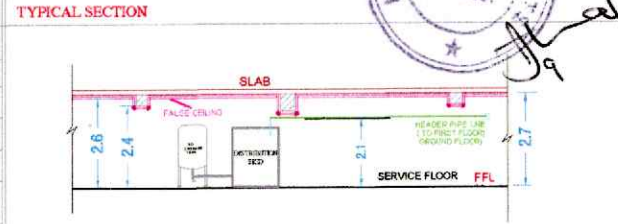


LEGENDS:

CODE	LOCATION	RO WATER PIPE
USR-1	FILTER WASH	MOC: SS 304
USR-2	WASH PLACE	PIPE SIZE FOR HEADER LINE - Ø 1.0"
		PIPE SIZE FOR TAPPING - Ø 1/2"
		NO. OF USER POINTS - 2 NOS.
		BOP (BOTTOM OF PIPE) - 2.0M FROM FFL
		IN ROOM 1200 MM FROM FINISHED FLOOR LEVEL
		TAPPING HEIGHT: OR AS PER EQUIPMENT CONNECTION REQUIREMENT
		NOTE: PIPE ROUTE IS ONLY INDICATIVE, IT MAY VARY AS PER SITE FEASIBILITY.

TYPICAL SECTION

HEIGHT DETAILS FROM FFL:
BOTTOM OF SLAB : 2.7M
BOTTOM OF BEAM : 2.1M
FALSE CEILING : PLEASE REFER FALSE CEILING LAYOUT



HOMCO.
CONSULTANT KNACK TECHNOCRATS
 42 AVINASH, J.P. ROAD, ANDHERI (W), MUMBAI - 400 053
 TEL: 91 22 26314010, 26361629
 EMAIL: info@knacktechnocrats.com

ALL DIMENSIONS ARE IN METERS UNLESS OTHERWISE SPECIFIED

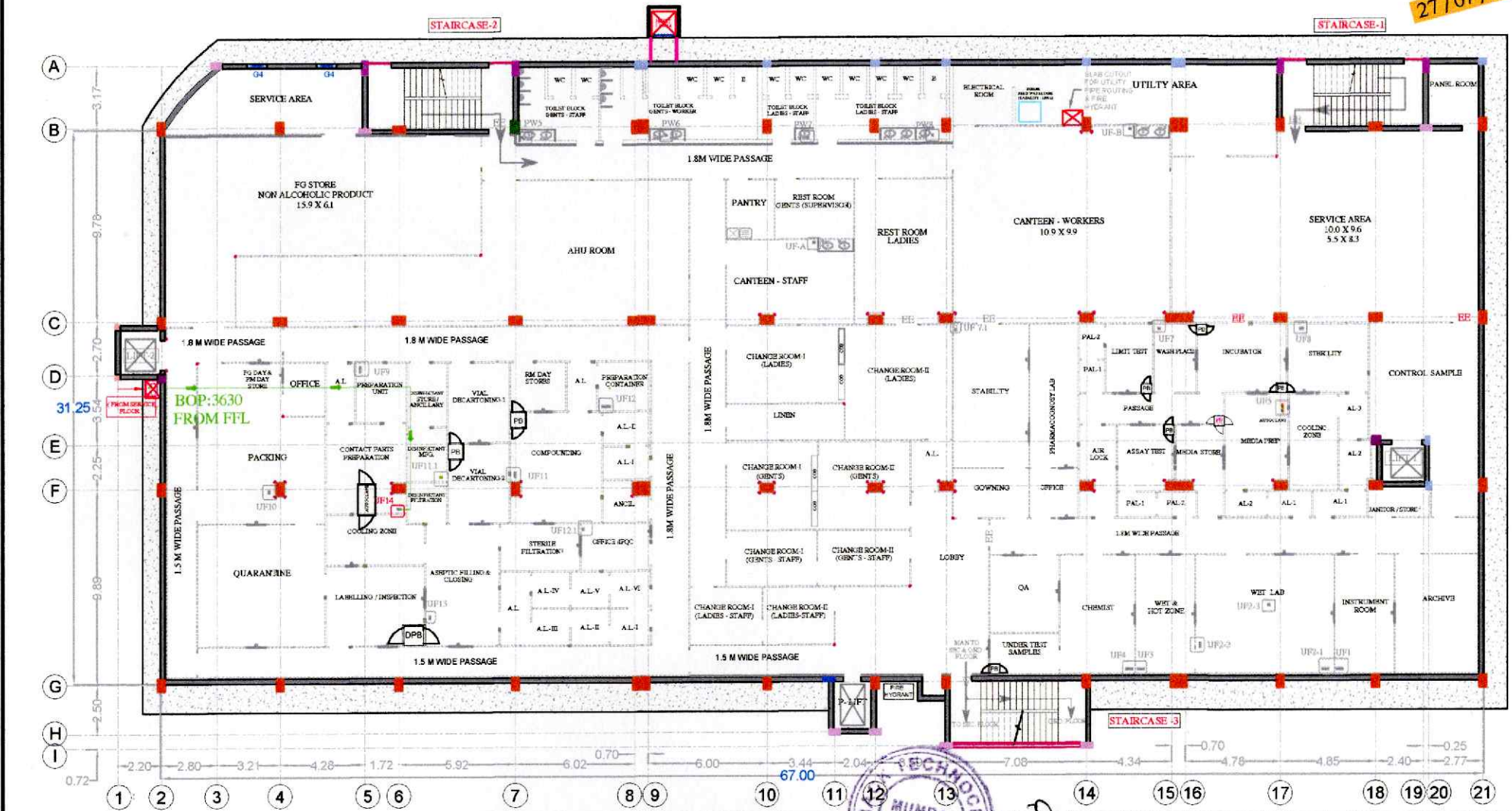
DRAWN BY	CHECKED BY	DATE	SCALE	DWG NO.	REVISION
I ANSAR		27-07-2023	N.T.S.	K/NO/P/RA/1	R-2022

TITLE: RO WATER PIPE ROUTING - (SERVICE FLOOR)
 FILE: Z:\Homco\2023\PURIFIED WATER BYSTEM\27-07-2023\RO water consum plant\12-08-2023\Pipe routing WATER F

TENTATIVE CONSUMPTION						
(SOFT WATER - CONSUMPTION + RECIRCULATION)						
Date:- 22 - 09 - 2023						
SR.NO.	CODE	ROOM NAME	SOFT WATER - CONSUMPTION (FLOW RATE - LITER / HR)	SOFT WATER - RECIRCULATION (FLOW RATE - LITER / HR)	REQUIRED PRESSURE KG/CM ²	PURPOSE
A	CONSUMPTION					
	FIRST FLOOR					
1	UF14	EQUIPMENT AUTOCLAVE	1000	-	1.2	For Vacuum system
2	USR	FEED WATER FOR BOILER	1500	-	-	Feed water to boiler
B	RE CIRCULATION CONSUMPTION					
	OINTMENT SECTION - GROUND FLOOR					
1	UG4	OINTMENT MANUFACTURING TANK (Capacity - 100 kg)	-	5000	2.0	For cooling the product
	OPHTHALMIC SECTION - FIRST FLOOR					
2	UF11	SOLUTION MANUFACTURING TANK (Capacity - 100 liters)	-	2000	3.0	For cooling the product
	TOTAL CONSUMPTION		2500	7000		
	GRAND TOTAL CONSUMPTION (LITRE / HR)		9500			
	TOTAL NO OF USER POINT		4 NOS.			

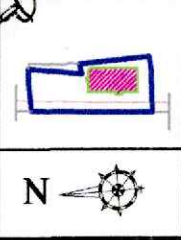
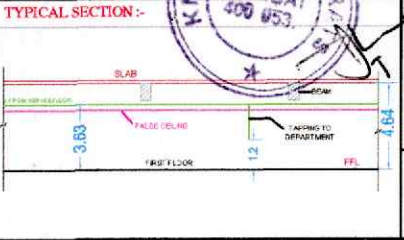
SOFT WATER PIPE ROUTING - (FIRST FLOOR)


27 / 07 / 2023



LEGENDS :	
CODE	LOCATION
UF-14	CONTACT PARTS PREPARATION (EQUIPMENT AUTOCLAVE)
	SOFT WATER PIPE
	MOC : SS 304
	PIPE SIZE FOR HEADER LINE - Ø 1.5"
	PIPE SIZE FOR TAPPING - Ø 1/2"
	NO. OF USER POINTS :- 01 NO.
	BOP (BOTTOM OF PIPE) :- 3.63 M FROM FFL
	IN ROOM 1200 MM FROM FINISHED FLOOR LEVEL
	TAPPING HEIGHT : OR AS PER EQUIPMENT CONNECTION REQUIREMENT
	NOTE: PIPE ROUTE IS ONLY INDICATIVE, IT MAY VARY AS PER SITE FEASIBILITY.

HEIGHT DETAILS FROM FFL :-	
	BOTTOM OF SLAB :- 4.64 M
	BOTTOM OF BEAM :- 4.0 M
	FALSE CHILING HEIGHT :- (PLEASE REFER FALSE LAYOUT)





HOMCO.

CONSULTANT: KNACK TECHNOCRAT'S

42 AVINASH J.P. ROAD, ANDHERI (W), MUMBAI - 400 053
 TEL: 91 22 26314010, 26361629
 EMAIL: info@knacktechnocrats.com

ALL DIMENSIONS ARE IN METERS UNLESS OTHERWISE SPECIFIED.

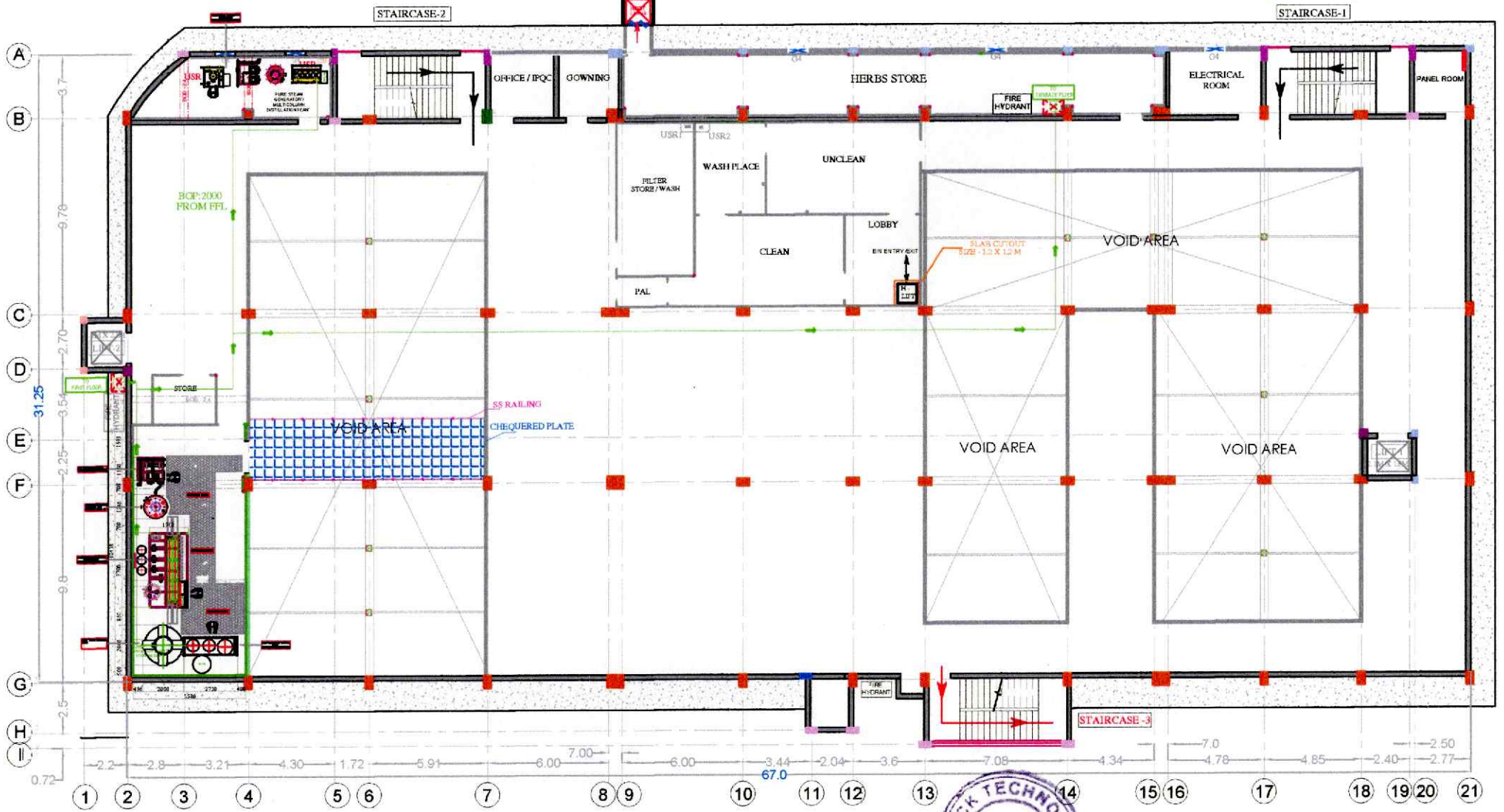
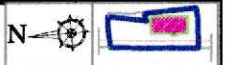
DRAWN BY	CHECKED BY	DATE	SCALE	DWG NO.	REVISION
ABID H	I ANSARI	27-07-2023	N.T.S	K/10/PT/SC-SV/13	R-2022

TITLE : SOFT WATER PIPE ROUTING - (FIRST FLOOR)

FILE : Z:\Homco\2023\PLIFIED WATER SYSTEM\27-07-2023\Soft water Consumption\12.09.2023\Pipe routing\SOFT W

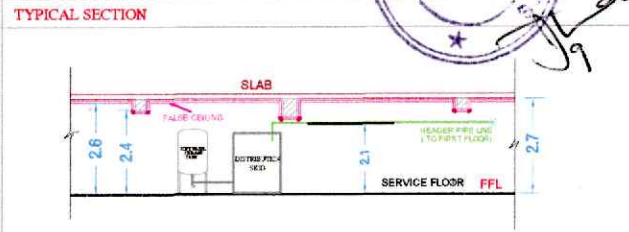
SOFT WATER PIPE ROUTING - (SERVICE FLOOR)

27/07/2023



LEGENDS :	
CODE	LOCATION
USR	WFI PLANT - 150 LTRS.

HEIGHT DETAILS FROM FFL:	
MOC : SS 304	BOTTOM OF SLAB : 2.6 M
PIPE SIZE FOR HEADER LINE - Ø 1.5"	BOTTOM OF BEAM : 2.1 M
PIPE SIZE FOR TAPPING - Ø 1/2"	FALSE CEILING : PLEASE REFER FALSE CEILING LAYOUT
NO. OF USER POINTS : 1 NO.	
BOP (BOTTOM OF PIPE) - 2.0M FROM FFL	
IN ROOM : 1200 MM FROM FINISHED FLOOR LEVEL	
TAPPING HEIGHT : OR AS PER EQUIPMENT CONNECTION REQUIREMENT	



HOMCO.
CONSULTANT:KNACK TECHNOCRATS
 42 AVINASH, J.P. ROAD, ANDHERI (W), MUMBAI - 400 053.
 TEL: 91 22 26314010,26361629
 EMAIL : info@knacktechnocrats.com

ALL DIMENSIONS ARE IN METERS UNLESS OTHERWISE SPECIFIED.

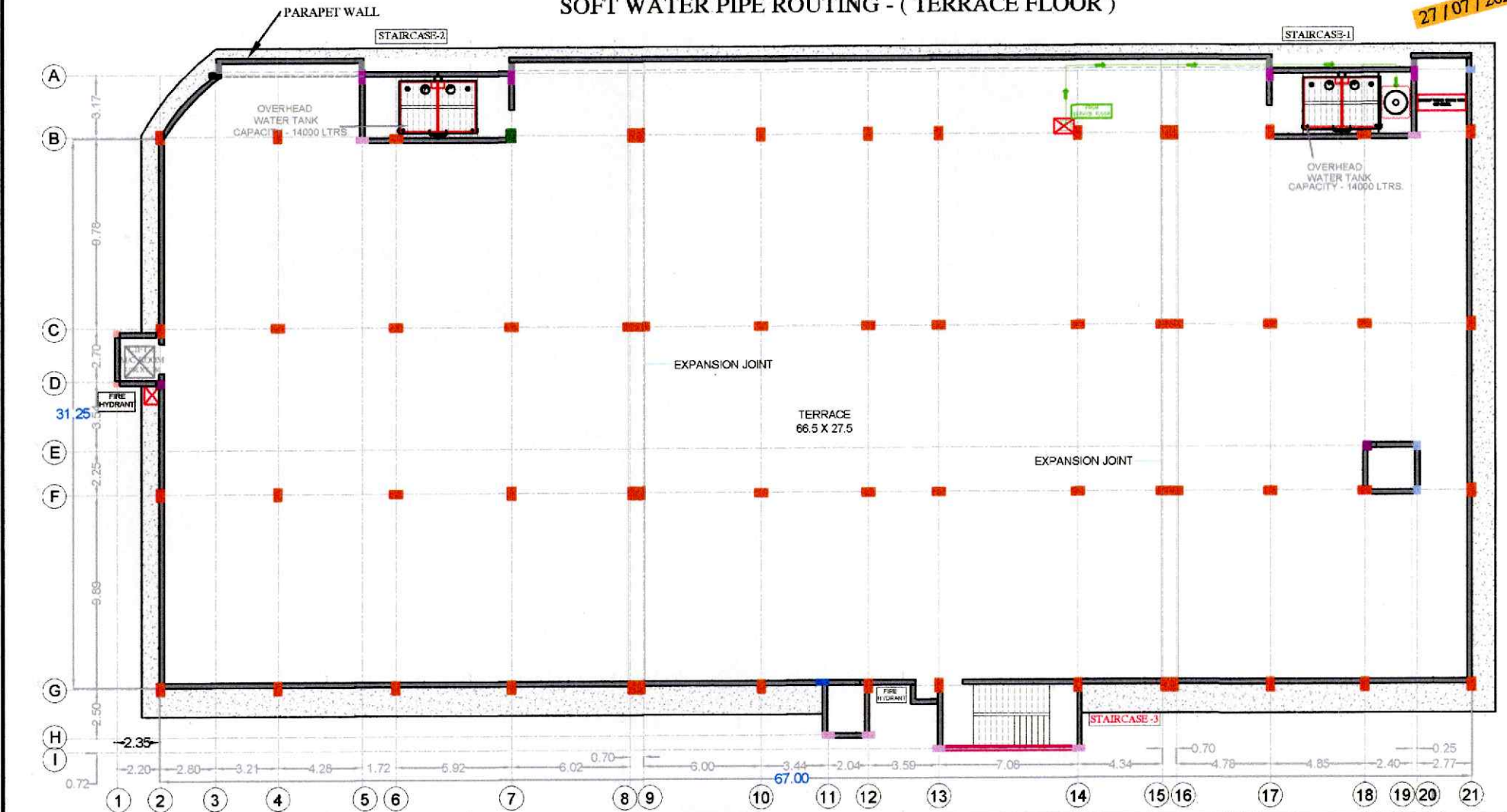
DRAWN BY	CHECKED BY	DATE	SCALE	DWG NO.	REVISION
ABID H	I ANSARI	27-07-2023	N.T.S	KT/AD/PP/WR/A1	R-2022

TITLE RO WATER PIPE ROUTING - (SERVICE FLOOR)
 FILE Z:\Homco\2023\PURIFIED WATER SYSTEM\27-07-2023\Soft water Consumption\12-09-2023\Pipe routing\OP

NOTE : PIPE ROUT IS ONLY INDICATIVE . IT MAY VARY AS PER SITE FEASIBILITY.

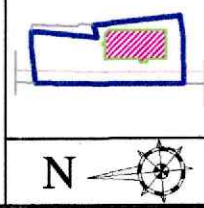
SOFT WATER PIPE ROUTING - (TERRACE FLOOR)

27/07/2023



LEGENDS :

CODE	LOCATION	
USR	MAKEUP WATER TANK - CAPACITY 1000L	<ul style="list-style-type: none"> SOFT WATER PIPE MOC : SS 304 PIPE SIZE FOR HEADER LINE - Ø 1.5" PIPE SIZE FOR TAPPING - Ø 1/2" NO. OF USER POINTS :- 1 NO. BOP (BOTTOM OF PIPE) - 1.0M FROM FFL IN ROOM 1200 MM FROM FINISHED FLOOR LEVEL TAPPING HEIGHT : OR AS PER EQUIPMENT CONNECTION REQUIREMENT



HOMCO.

CONSULTANT: KNACK TECHNOCRATS

42 AWAKASH, J.P. ROAD, ANDHERI (W), MUMBAI - 400 053.
 TEL: 91 22 25314010, 26361629
 EMAIL: info@knacktechnocrats.com

ALL DIMENSIONS ARE IN METERS UNLESS OTHERWISE SPECIFIED.

DRAWN BY	CHECKED BY	DATE	SCALE	DWG NO	REVISION
ABID H	I ANSARI	27-07-2023	N.T.S	HT/WHY/PLW/04	-

TITLE: SOFT WATER PIPE ROUTING - (TERRACE FLOOR)

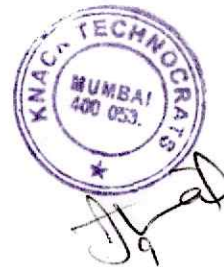
FILE: Z:\hmc\2023\PURIFIED WATER SYSTEM\07-07-2023\Soft water Consumption\07-07-2023\Pipe routing\SOFT WATER

NOTE : PIPE ROUT IS ONLY INDICATIVE , IT MAY VARY AS PER SITE FEASIBILITY.

SUMMARY - PURIFIED WATER CONSUMPTION

Date :- 27-07-2023

SR.NO.	DISCRIPTION	TOTAL CONSUMPTION LITRES/ SHIFT	TOTAL NO. OF USER POINTS	REMARK
1	Gound Floor	100	1	
2	First Floor	370	7	
3	Second Floor	1850	15	
4	Service Floor	430	3	
5	Raw Material Store	300	2	
	TOTAL	3050.0	28.0	
Total Consumption per shift		3050 liters / Shift		
Plant Capacity		2000 L /HR		
Storage Tank Capacity		1000 Ltrs		
Peak Hour Consumption (As Per Tentative Peak Load Calaculation)		800 L		
Peak Hour Consumption (*For design system) (Consider Future load)		1000 L		
Approximat Pipe Length		-		
Approximat Pipe Height - Service Floor to Ground Floor (Maximum)		13.0 Mtrs.		
Proposed Plant Location		On Service Floor		
Production Building Dimension		67.0M X 31.0 M = 2077 Sq. Mtr		
Production Building Total Height		18.3 M		



**TENTATIVE PURIFIED WATER CONSUMPTION
(GROUND FLOOR)**

Date :- 27-07-2023

SR.NO.	CODE	ROOM NAME	PURIFIED WATER LITRES/ SHIFT	FLOW RATE LITERS/HR.	PURPOSE
		Ointment Mfg.			
1	UG4	Ointment Manufacturing Plant (Batch size : 100 Kg)	100	100	Manufacturing
		TOTAL CONSUMPTION	100.0		
		TOTAL NO. OF USER POINTS	01 No.		
NOTE :- CONSUMPTIONS & FLOW RATE ARE APPROXIMATE , MAY VARY AS PER THE EQUIPMENTS / PROCESS REQUIREMENT.					



**TENTATIVE PURIFIED WATER CONSUMPTION
(FIRST FLOOR)**

Date :- 27 - 07 - 2023

SR. NO.	CODE	ROOM NAME	PURIFIED WATER LITRES/ SHIFT	FLOW RATE LITERS/HR.	PURPOSE
QC & Micro Section					
1	UF 2-2	Wet Lab (Wash Basin)	50	100	Washing
2	UF7.1	Stability (Chamber Filling)	50	100	Chamber Filling
Ophthalmic Section					
3	UF9	Unit Preparation - (Washing)	100	100	Washing of vessels / change parts
4	UF11	Manufacturing (Compounding) Batch Size : 100 liters	50	100	Washing
5	UF11.1	Disinfectant Manufacturing (Process)	20	100	Manufacturing
6	UF12	Container Preparation (Washing)	100	100	Washing of vessels / change parts
TOTAL CONSUMPTION			370.0		
TOTAL NO. OF USER POINTS			06 Nos.		

NOTE :- CONSUMPTIONS & FLOW RATE ARE APPROXIMATE , MAY VARY AS PER THE EQUIPMENTS / PROCESS REQUIREMENT.



**TENTATIVE PURIFIED WATER CONSUMPTION
(SECOND FLOOR)**

Date :- 27-07-2023

SR.NO.	CODE	ROOM NAME	PURIFIED WATER LITRES/ SHIFT	FLOW RATE LITERS/HR.	PURPOSE
Mothertincture section					
1	US1	Maceration (Batch Size - 500 liters)	100	100	Washing
2	US3.1	Filling (Odour liquid)	100	100	Provision for future use
3	US4-3	Filling & labelling (Mothertincture)	100	100	
4	US7-1	Bottle washing (For both back potency & Mothertincture)	500	100	Washing
5	US7-2	Tray washing (96 trays)	100	100	Tray washing
Back Potency Section					
6	US8	Back Potency Manufacturing	100	100	Manufacturing
7	US12.1	Filling line 1 (500 liters tank)	100	100	CIP
8	US12.1	Filling line 2 (500 liter tank)	100	100	
Tablet Section					
9	US14	Trituration	50	100	Provision
10	US15	Granulation RMG 600 ltrs	100	100	CIP
11	US16	Granulation FBD 250 kgs	100	100	CIP
12	US17	Paste preparation Vessel (150 liters)	100	100	Preparation / washing / Rising
13	US19	Blender - 1200 litres	200	100	CIP
14	US21	Wash Place - (Compression -1)	50	100	change parts Washing / Rinsing
15	US23	Wash Place - (Compression -2)	50	100	
TOTAL CONSUMPTION			1850.0		
TOTAL NO. OF USER POINTS			15 Nos.		

NOTE :- CONSUMPTIONS & FLOW RATE ARE APPROXIMATE , MAY VARY AS PER THE EQUIPMENTS / PROCESS REQUIREMENT.



**TENTATIVE PURIFIED WATER CONSUMPTION
(SERVICE FLOOR)**

Date :- 27-07-2023

SR.NO.	CODE	ROOM NAME	PURIFIED WATER LITRES/ SHIFT	FLOW RATE LITERS/HR.	PURPOSE
1	USR2	Wash Place (Bin washing) (IPC -130 liters)	100	100	Washing / Rinsing
2	-	WFI Plant (150 liters/hr)	200	100	Manufacturing Process
3	-	Pure Steam Generator (100Kg/hr)	130	100	
TOTAL CONSUMPTION			430.0		
TOTAL NO. OF USER POINTS			03 Nos.		

NOTE :- CONSUMPTIONS & FLOW RATE ARE APPROXIMATE , MAY VARY AS PER THE EQUIPMENTS / PROCESS REQUIREMENT.



**TENTATIVE PURIFIED WATER CONSUMPTION
(RAW MATERIAL STORE - ALCOHOL)**

Date :- 27-07-2023

SR.NO.	CODE	ROOM NAME	PURIFIED WATER LITRES/ SHIFT	FLOW RATE LITERS/HR.	PURPOSE
1	USS1	Raw material store	100	100	Rinsing
2	USS2	Blending with purified water (500 ltrs x 4 nos.)	200	100	Manufacturing / washing
TOTAL CONSUMPTION			300.0		
TOTAL NO. OF USER POINTS			2 Nos.		

NOTE :- CONSUMPTIONS & FLOW RATE ARE APPROXIMATE , MAY VARY AS PER THE EQUIPMENTS / PROCESS REQUIREMENT.



SUMMARY - RO WATER CONSUMPTION

Date :- 27-07-2023

SR.NO.	DISCRIPTION	TOTAL CONSUMPTION LITRES/ SHIFT	TOTAL NO. OF USER POINTS	REMARK
1	Gound Floor	500	8	
2	First Floor	550	9	
3	Second Floor	600	7	
4	Service Floor	300	2	
	TOTAL	1950.0	26.0	
Total Consumption per shift		1950 liters / Shift		
Plant Capacity		-		
Storage Tank Capacity		300 Ltrs		
Peak Hour Consumption (As Per Tentative Peak Load Calaculation)		500 L		
Peak Hour Consumption (*For design system) (Consider Future load)		800 L		
Approximat Pipe Length		-		
Approximat Pipe Height - Service Floor to Ground Floor (Maximum)		13.0 Mtrs.		
Proposed Plant Location		On Service Floor		
Production Building Dimension		67.0M X 31.0 M = 2077 Sq. Mtr		
Production Building Total Height		18.3 M		



**TENTATIVE RO WATER CONSUMPTION
(GROUND FLOOR)**

Date :- 27-07-2023

SR.NO.	CODE	ROOM NAME	RO WATER LITRES/ SHIFT	FLOW RATE LITERS/HR.	PURPOSE
STORE					
1	UG1	Wash place (Sampling)	50	100	Washing of spatula , scoops etc.
2	UG2	Wash place (Dispensing)	50	100	
3	UG3	Wash place (Herbs processing)	100	100	Washing / Rinsing
Ointment Mfg.					
4	UG5	Wash place (Ointment Manufacturing)	50	100	Washing / Rinsing
5	UG7	Wash place (Fill / Seal)	50	100	
Canteen & Lobby					
6	UG-A	Canteen	100	100	Provision
7	UG-B	Lobby Area	50	100	
8	UG-C	South West Corner	50	100	
TOTAL CONSUMPTION			500.0		
TOTAL NO. OF USER POINTS			08 Nos.		

NOTE :- CONSUMPTIONS & FLOW RATE ARE APPROXIMATE , MAY VARY AS PER THE EQUIPMENTS / PROCESS REQUIREMENT.



**TENTATIVE RO WATER CONSUMPTION
(FIRST FLOOR)**

Date :- 27 - 07 - 2023

SR. NO.	CODE	ROOM NAME	RO WATER LITRES/ SHIFT	FLOW RATE LITERS/HR.	PURPOSE
QC & Micro Section					
1	UF1	Instrument Room (Wash Basin)	50	100	Washing
2	UF 2-1	Wet Lab (Wash Basin)	50	100	
3	UF3	Wet & Hot Zone (Wash Basin)	50	100	
4	UF4	Chemist Room (Wash Basin)	50	100	
5	UF5	Media Preparation (Process)	50	100	
6	UF7	Wash Place (Micro Section)	50	100	
Ophthalmic Section					
7	UF12.1	Office / IPQC (Drop)	50	100	Provision
Canteen					
8	UF-A	Canteen - Staff	100	100	Provision
9	UF-B	Canteen - Worker	100	100	
TOTAL CONSUMPTION			550.0		
TOTAL NO. OF USER POINTS			09 Nos.		

NOTE :- CONSUMPTIONS & FLOW RATE ARE APPROXIMATE , MAY VARY AS PER THE EQUIPMENTS / PROCESS REQUIREMENT.



**TENTATIVE RO WATER CONSUMPTION
(SECOND FLOOR)**

Date :- 27-07-2023

SR.NO.	CODE	ROOM NAME	RO WATER LITRES/ SHIFT	FLOW RATE LITERS/HR.	PURPOSE
Mothertincture section					
1	US2	Wash Place (Maceration)	100	100	Washing
2	US5	Wash Place (Mothertincture filling)	100	100	Washing
Back Potency Section					
3	US12	was place (Back Potency)	100	100	Washing
Tablet Section					
4	US18	Granulation Wash Place	100	100	Washing / Rinsing
5	US24	Wash Place (Inspcetion / Blister / Bulk)	100	100	Change parts Washing / Rinsing
6	US24.1	Office/IPQC (Drop)	50	100	Provision
Other Area					
7	US-A	Passage - South West Corner	50	100	Provision
TOTAL CONSUMPTION			600.0		
TOTAL NO. OF USER POINTS			07 Nos.		

NOTE :- CONSUMPTIONS & FLOW RATE ARE APPROXIMATE , MAY VARY AS PER THE EQUIPMENTS / PROCESS REQUIREMENT.



**TENTATIVE RO WATER CONSUMPTION
(SERVICE FLOOR)**

Date :- 27- 07- 2023

SR.NO.	CODE	ROOM NAME	RO WATER LITRES/ SHIFT	FLOW RATE LITERS/HR.	PURPOSE
1	USR1	Filter Washing	100	100	Washing / Rinsing
2	USR2	Wash Place (Bin washing) (IPC -130 liters)	200	100	
TOTAL CONSUMPTION			300.0		
TOTAL NO. OF USER POINTS			02 Nos.		

NOTE :- CONSUMPTIONS & FLOW RATE ARE APPROXIMATE , MAY VARY AS PER THE EQUIPMENTS / PROCESS REQUIREMENT.



**TENTATIVE CONSUMPTION
(SOFT WATER)**

Date:- 26 - 08 - 2023

SR.NO.	CODE	ROOM NAME	SOFT WATER (FLOW RATE - LITER / HR)	PURPOSE
		OPHTHALMIC SECTION - FIRST FLOOR		
1	UF14	EQUIPMENT AUTOCLAVE	1000	Washing of vessels / change parts / linen
		UTILITY EQUIPMENT - SERVICE FLOOR		
2	USR	WFI PLANT (CAPACITY : 150 LITRES / HR.) (ON SERVICE FLOOR)	345	Manufacturing Process
		UTILITY EQUIPMENT - TERRACE		
3	USR	MAKEUP WATER TANK - CAPCITY 1000 L	1000	For Cooling Tower
		TOTAL CONSUMPTION (LITRE / HR)	2345	
		TOTAL NO OF USER POINT	3 NOS.	
		PEAK HOUR CONSUMPTION (LITRE / HR)	1345	

