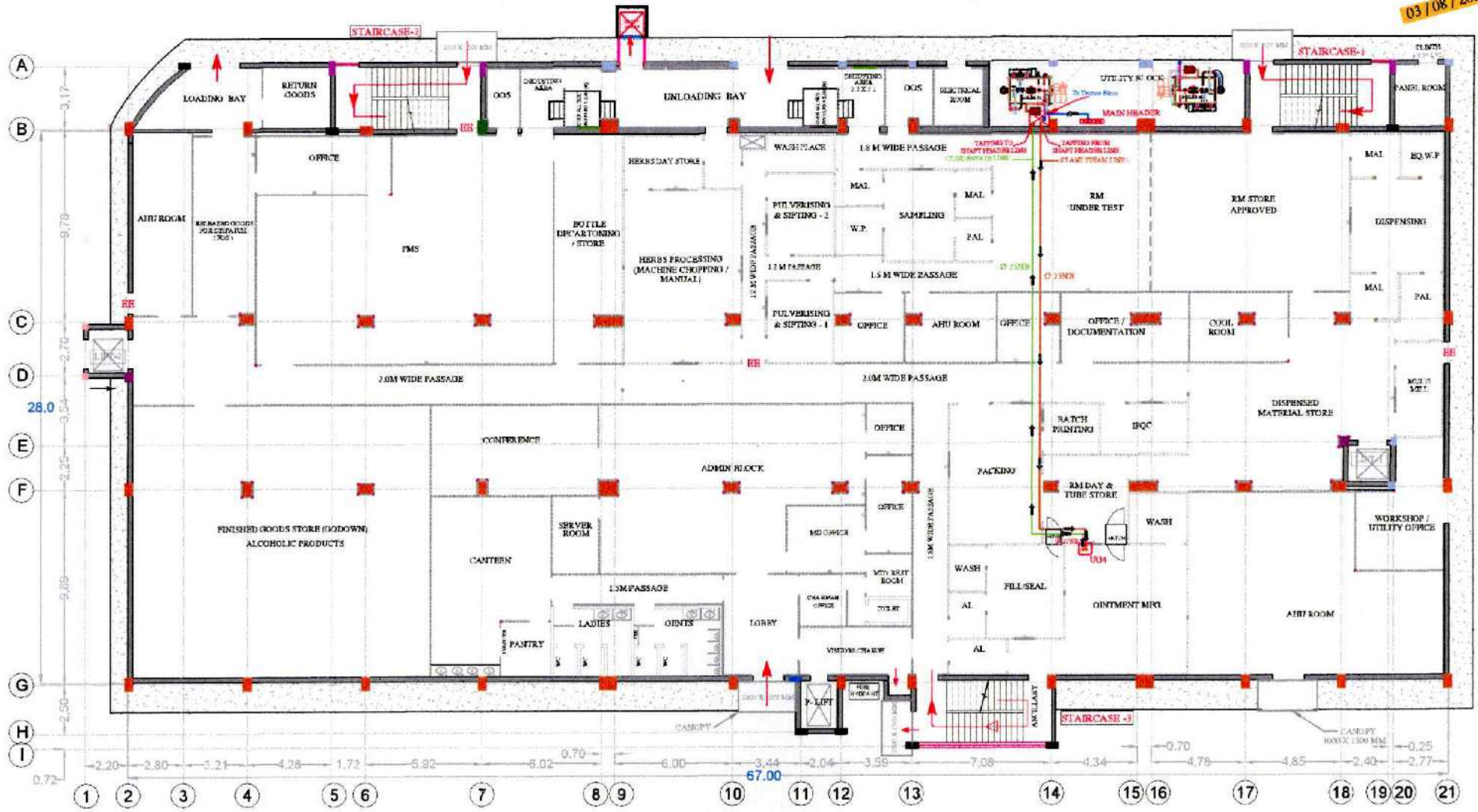




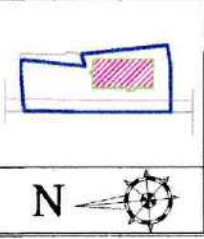
# PLANT STEAM WITH CONDENSATE PIPE ROUTING - ( GROUND FLOOR )

03 / 08 / 2023



LEGENDS :	
CODE	LOCATION
UG - 4	<p>  PROPOSED STEAM PIPE ROUTE @ 3.5 bar   PROPOSED CONDENSATE PIPE ROUTE                      NOTE :- PIPE SIZE IS MENTION IN THIS DRAWING                      MOC :- CS PIPE , ASTM A 106 GRADE-B , SCHEDULE 40                      NO. OF USER POINTS :- 1 NO.                      BOP (BOTTOM OF PIPE) :- 3.35 M FROM PFL.                      IN ROOM 1200 MM FROM FINISHED FLOOR LEVEL.                      TAPPING HEIGHT :- OK AS PER ROUTING CONNECTION REQUIREMENT                 </p>

ABBREVIATION :-
• ST - STEAM
HEIGHT DETAILS :-
BOTTOM OF SLAB :- 4.0 M
BOTTOM OF BEAM :- 3.450 M
FALSE CEILING HEIGHT :- PLEASE REFER PALSE CEILING LAYOUT



**HOMCO.**

**CONSULTANT: KNACK TECHNOCRATS**

42 AVINASH, J.P. ROAD, ANDHRI (W), MUMBAI - 400 053  
 TEL: 91 22 26314010, 26361529  
 EMAIL: info@knacktechnocrats.com

ALL DIMENSIONS ARE IN METERS UNLESS OTHERWISE SPECIFIED.

DRAWN BY	CHECKED BY	DATE	SCALE	DWG NO.	REVISION
ABD H.	I ANSARI	03-08-2023	N/T S	KVAB/700/01-00/04	-

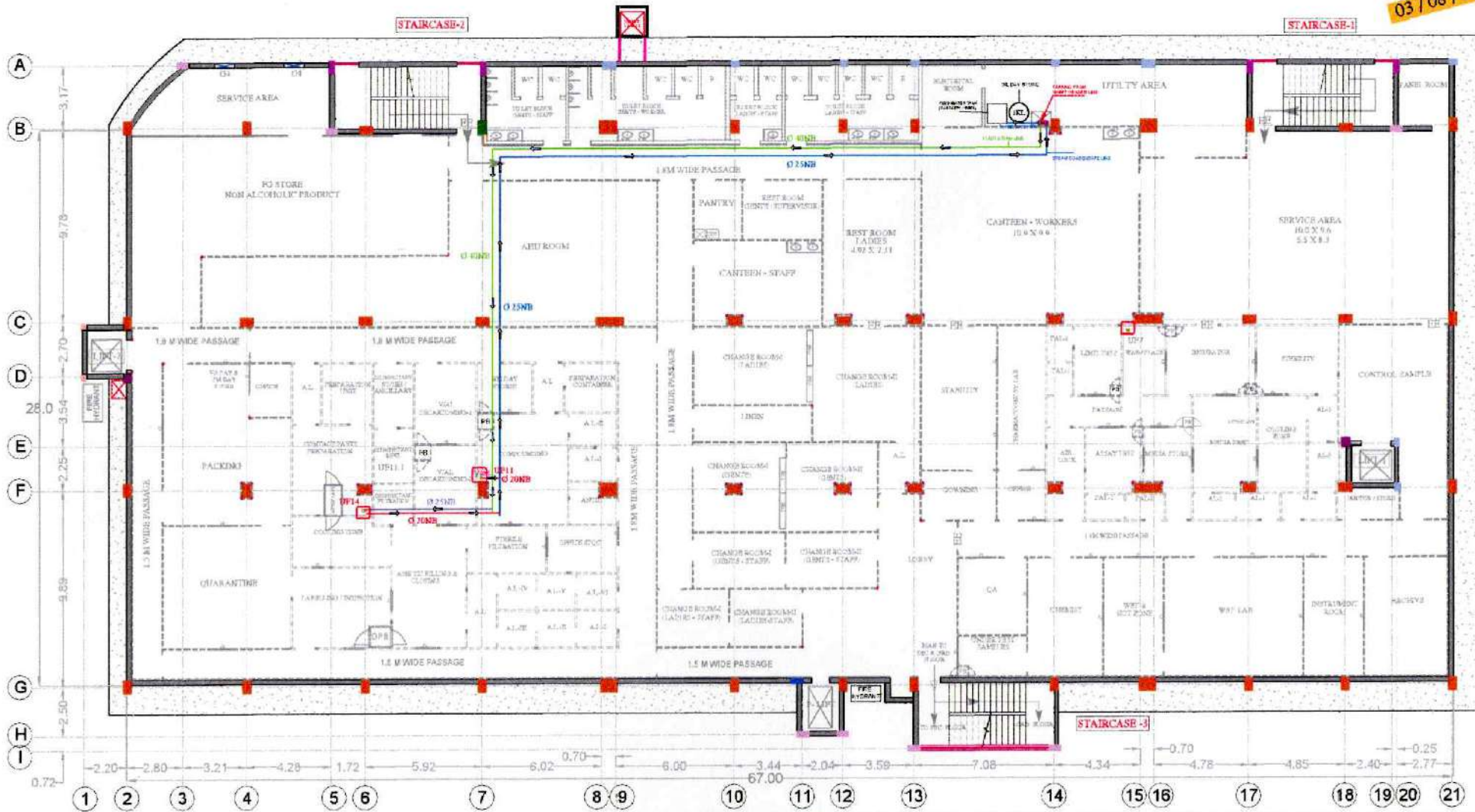
TITLE: PLANT STEAM WITH CONDENSATE PIPE ROUTING - ( GROUND FLOOR )

F.L.E. 2 (Date: 03/08/2023) Pipe routing - steam with condensate pipe@DC CG PFD/Plant steam with condensate pipe routing



# PLANT STEAM WITH CONDENSATE PIPE ROUTING - ( FIRST FLOOR )

03 / 08 / 2023



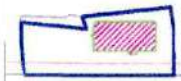
**LEGENDS :**

CODE	LOCATION	DESCRIPTION
UP-11	OPTIMAL MFG MANUFACTURING VESSEL - 100 LITERS	PROPOSED PIPE ROUTE @ 3.5 bar
UP-14	EQUIPMENT AUTOCLAVE - HORIZONTAL	PROPOSED STEAM/CONDENSATE ROUTE

NOTE - PIPE SIZE IS MENTION IN THE DRAWING  
MCC - CS PIPE, ASTM A 106 GRADE - B, SCHEDULE 40  
NO. OF USER POINTS - 02 NOS  
BOP (BOTTOM OF PIPE) - 3.61 M FROM PFL  
IN ROOM 1200 MM FROM FINISHED FLOOR LEVEL  
TAPPING HEIGHT: OR AS PER EQUIPMENT CONNECTION REQUIREMENT

**ABBREVIATION >**  
 • PS - PLANT STEAM  
**HEIGHT DETAILS FROM PFL >**  
 BOTTOM OF SLAB :- 4.64 M  
 BOTTOM OF BEAM :- 4.0 M  
 FALSE CEILING HEIGHT :- (PLEASE REFER FALSE CEILING LAYOUT)

NOTE - ALL HEADER PIPE LINE ARE RUNNING OVER FALSE CEILING  
 PIPE ROUTES ARE INDICATIVE, MAY VARY AS PER SITE FEASIBILITY.



**HOMCO.**  
**CONSULTANT: KNACK TECHINOCRATS**

47 AVINASH, J.P. ROAD, ANDHERI (W), MUMBAI - 400 063  
 TEL: 91 22 26214010, 26301029  
 EMAIL: info@knacktechnocrats.com

ALL DIMENSIONS ARE IN METERS UNLESS OTHERWISE SPECIFIED.

DRAWN BY	CHECKED BY	DATE	SCALE	DWG NO.	REVISION
ABD H	I ANSARI	03-08-2023	N.T.S.	KT/MS/P/PS/CS/AS	-

TITLE: PLANT STEAM WITH CONDENSATE PIPE ROUTING - ( FIRST FLOOR )  
 FILE: Z:\Users\J.P. Wadgaonkar\Desktop\22 Pipe routing - steam with condensate pipe\MCC CS PIPE\Part sheet 01.dwg

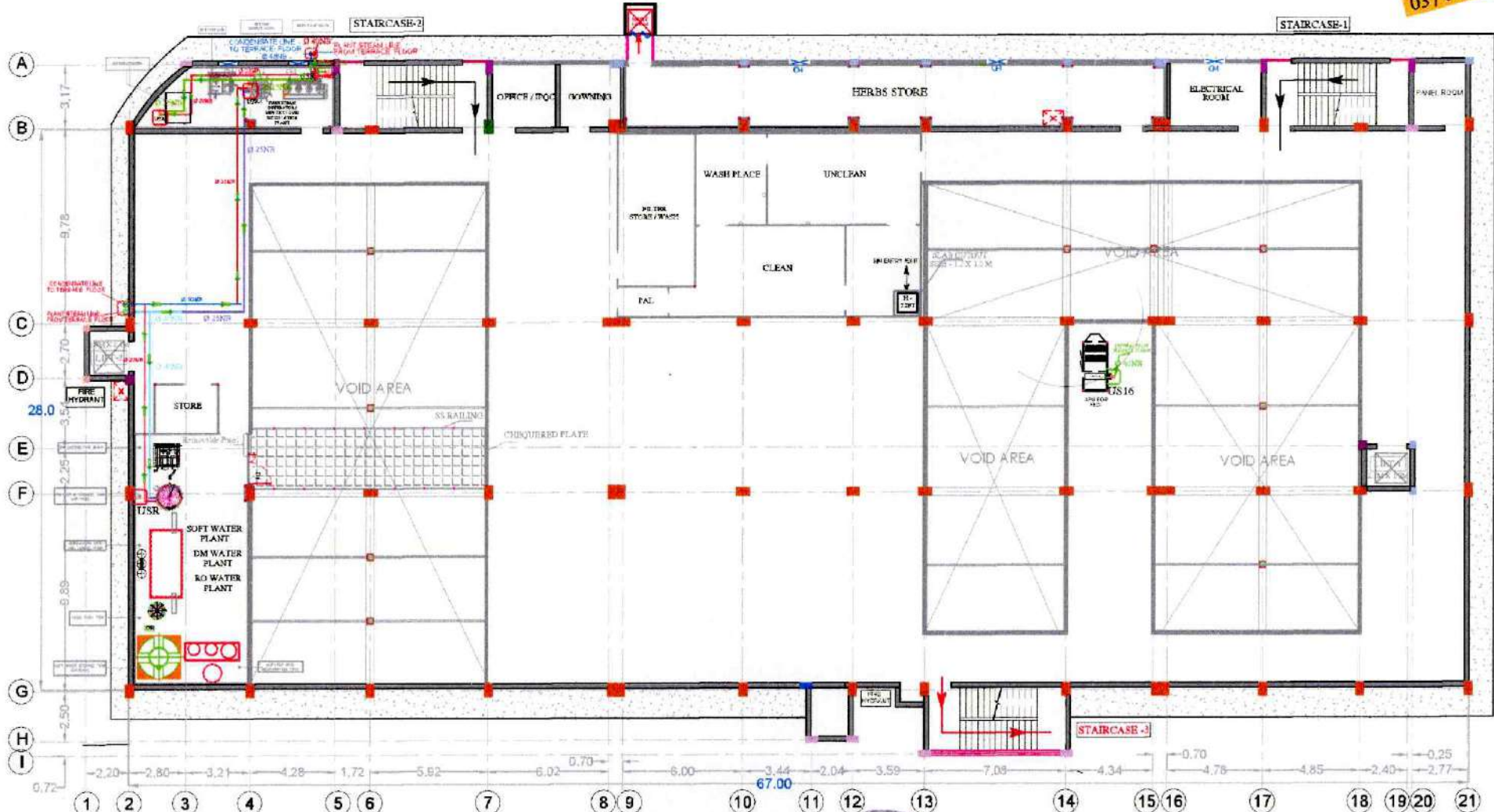






# PLANT STEAM WITH CONDENSATE PIPE ROUTING - ( SERVICE FLOOR )

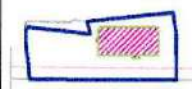
03 / 08 / 2023



CODE	LOCATION
US16	AUT - 4000 CFM (AIR PRESSURE UNIT) (FOR FHD - 250KG)
USR	WT (WATER FOR INJECTION) PLANT - CAPACITY - 150LPH
USR	PURE STEAM GENERATION - 100 KHS
USR	PURIFIED WATER STORAGE TANK CAPACITY - 1000L
USR	WT (WATER FOR INJECTION) STORAGE TANK CAPACITY - 300L

	PROPOSED PLANT STEAM PIPE ROUTE @ 6.0 bar
	PROPOSED PLANT STEAM PIPE ROUTE @ 3.5 bar
	PROPOSED CONDENSATE PIPE ROUTE
NOTH :- PIPE SIZE IS MENTION IN THE DRAWING.	
MOC : CS PIPE . ASTM A 106 GRADE -B , SCHEDULE 40	
NO. OF USR POINTS :- 5 NOS.	
BOP (BOTTOM OF PIPE) - 20MM FROM PFL	
IN ROOM 1200 MM FROM FINISHED FLOOR LEVEL	
TAPPING HEIGHT : OR AS PER EQUIPMENT CONNECTION REQUIREMENT	

ABBREVIATION :-
● PS - PLANT STEAM
HEIGHT DETAILS FROM PFL:
BOTTOM OF SLAB : 2.7 M
BOTTOM OF BEAM : 3.2 M
FALSE CEILING PLEASE REFER FALSE CEILING LAYOUT



**HOMCO.**

**CONSULTANT: KNACK TECHNOCRATS**

42 AVINASH J.P. ROAD, ANDHRI (W), MUMBAI - 400 053  
 TEL: 91 22 26314010, 26361629  
 EMAIL: info@knacktechnocrats.com

ALL DIMENSIONS ARE IN METERS UNLESS OTHERWISE SPECIFIED

DRAWN BY	CHECKED BY	DATE	SCALE	DWG NO.	REVISION
ABD H	I ANSARI	03-08-2023	N.T.S	KT/NO/P/W/A/S	-

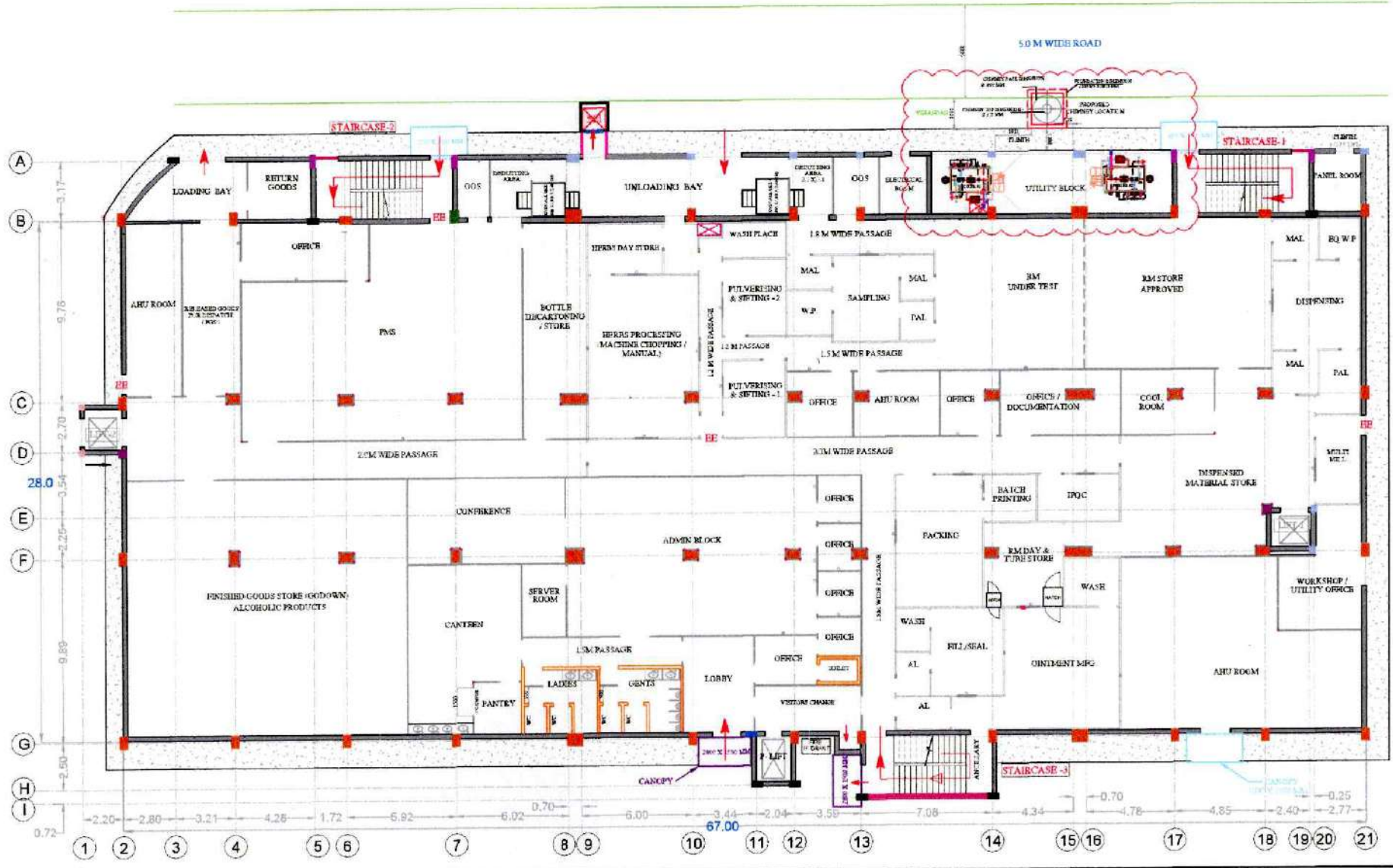
TITLE: PLANT STEAM WITH CONDENSATE PIPE ROUTING - ( SERVICE FLOOR )  
 FILE: Z:\Homco\022608\Exp\022608 Pipe routing - steam with condensate approval CS PPR\Plant draw 1





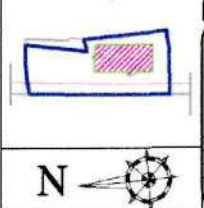
PROPOSED BOILER & CHIMNEY LOCATION - ( GROUND FLOOR )

03/08/2023



**LEGENDS:**

<b>BOILER DETAILS -</b>	<b>CHIMNEY DETAILS -</b>
BOILER CAPACITY :- 750 KG/HR	BASE DIAMETER :- 1000 MM
QUANTITY :- 2 NOS.	TOP DIAMETER :- 200 MM
	TYPE :- SHEL.P SUPPORTING
	HEIGHT :- 25 M APPROX.
	QUANTITY :- 1 No.



**HOMCO.**

**CONSULTANT: KNACK TECHNOCRATS**

42 AVINASH, J.P. ROAD, ANDHERI (W), MUMBAI - 400 055  
 TEL: 91 22 26314010, 26361629  
 EMAIL: info@knacktechnocrats.com

ALL DIMENSIONS ARE IN METERS UNLESS OTHERWISE SPECIFIED.

DRAWN BY	CHECKED BY	DATE	SCALE	DWG. NO.	REVISION
ABD.F.	ANISH	03-08-2023	N.T.S.	1/03/2023-08-03	

TITLE: PROPOSED BOILER & CHIMNEY LOCATION - ( GROUND FLOOR )

FILE: Z:\homco\CO2\Bills of Materials\Proposed boiler & chimney location\Proposed boiler and chimney loc...

TENTATIVE PLANT STEAM CONSUMPTION								Date :- 03-08-2023
[ IBR & NON IBR POINTS ]								
SR NO.	CODE	ROOM NAME	PLANT STEAM		STEAM TEMPERATURE	PROCESS TEMPERATURE	CONTROLLER	REMARK
			REQUIRED PRESSURE	Kgs/hr	° C	° C		
<b>A PRESSURE FOR IBR PIPE LINE</b>								
<u>SERVICE FLOOR</u>								
1	USR	Pure Steam Generator - 100kg /hr	5.0 to 6.0 KG/CM <sup>2</sup>	127	110-120	110-120	PID	
2	USR	WFI (water for injection) Plant - 150 LPH	6.0 KG/CM <sup>2</sup>	170	110-120	110-120	PID	
<b>B PRESSURE FOR NON IBR PIPE LINE</b>								
<u>GROUND FLOOR</u>								
3	UG4	Ointment Manufacturing Plant - 100kg (Cream Manufacturing Vessel)	3.5 KG/CM <sup>2</sup>	100	80 - 100	60 - 80	PID	
<u>FIRST FLOOR</u>								
4	UF14	Equipment Autoclave - Horizontal	1.5 KG/CM <sup>2</sup>	100	121	121	PID	
5	UF11	Ophthalmic solution Manufacturing vessel - 100 liters	3.0 to 3.5 KG/CM <sup>2</sup>	50	80 - 100	60 - 80	PID	
<u>SECOND FLOOR</u>								
6	US17	Paste preparation Vessel - 150 liters (Electrical)	3.0 to 3.5 KG/CM <sup>2</sup>	70	60 - 70	50 - 60	PID	Provision Only
7	US7-4	Tray Drier - 1 ( 48 Nos. )	3.5 KG/CM <sup>2</sup>	50	60 - 70	50 - 60	PID	
8	US7-5	Tray Drier - 2 ( 48 Nos. )	3.5 KG/CM <sup>2</sup>	50	60 - 70	50 - 60	PID	
<u>SERVICE FLOOR</u>								
9	US16	APU - 4000 CFM (Air pressur Unit)- For FBD 250 kgs	3.5 KG/CM <sup>2</sup>	180	80 - 100	60 - 80	PID	
10	USR	WFI (water for injection) Storage tank - 300 liters	3.5 KG/CM <sup>2</sup>	125	80 - 90	60 - 70	PID	
11	USR	Purified water Storage tank - 1000 liters	3.5 KG/CM <sup>2</sup>	125	80 - 90	60 - 70	PID	
Total Consumptions - Kgs/hr				1147				
Total no. of user points				11 Nos.				
Peak Consumption - Kgs / hr				180				
Boiler Capacity				750 Kg/hr ( 2 Nos.)				
Boiler Location				On Ground Floor				
<b>NOTE :- CONSUMPTIONS &amp; PRESSURES ARE APPROXIMATE , MAY VARY AS PER THE PROCESS REQUIREMENT / VENDORS EQUIPMENTS.</b>								

